

(DANRE) rfx4 Antibody

Purified Rabbit Polyclonal Antibody (Pab)
Catalog # AP18707b

Product Information

Application	WB, E
Primary Accession	A2BGA0
Reactivity	Human, Mouse
Host	Rabbit
Clonality	Polyclonal
Isotype	Rabbit IgG
Clone Names	RB49772
Calculated MW	82819

Additional Information

Gene ID	403016
Other Names	Transcription factor RFX4, Regulatory factor X 4, rfx4
Target/Specificity	This (DANRE) rfx4 antibody is generated from a rabbit immunized with a KLH conjugated synthetic peptide between 58-89 amino acids from the human region of human (DANRE) rfx4.
Dilution	WB~~1:1000 E~~Use at an assay dependent concentration.
Format	Purified polyclonal antibody supplied in PBS with 0.09% (W/V) sodium azide. This antibody is purified through a protein A column, followed by peptide affinity purification.
Storage	Maintain refrigerated at 2-8°C for up to 2 weeks. For long term storage store at -20°C in small aliquots to prevent freeze-thaw cycles.
Precautions	(DANRE) rfx4 Antibody is for research use only and not for use in diagnostic or therapeutic procedures.

Protein Information

Name	rfx4
Function	May activate transcription by interacting directly with the X-box.
Cellular Location	Nucleus {ECO:0000255 PROSITE-ProRule:PRU00858}.

Background

May activate transcription by interacting directly with the X-box (By similarity).

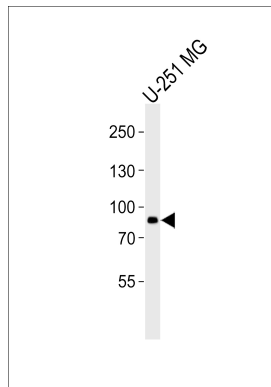
References

Blackshear P.J.,et al.Development 130:4539-4552(2003).

Nagayoshi S.,et al.Development 135:159-169(2008).

Howe K.,et al.Nature 496:498-503(2013).

Images



Western blot analysis of lysate from U-251 MG cell line, using (DANRE) rfx4 Antibody(Cat. #AP18707b). AP18707b was diluted at 1:1000. A goat anti-rabbit IgG H&L(HRP) at 1:5000 dilution was used as the secondary antibody. Lysate at 35ug.

Please note: All products are 'FOR RESEARCH USE ONLY. NOT FOR USE IN DIAGNOSTIC OR THERAPEUTIC PROCEDURES'.