

EMP3 Antibody (C-term)

Affinity Purified Rabbit Polyclonal Antibody (Pab)

Catalog # AP18662b

Product Information

Application	WB, E
Primary Accession	P54852
Other Accession	NP_001416.1
Reactivity	Human
Host	Rabbit
Clonality	Polyclonal
Isotype	Rabbit IgG
Clone Names	RB37403
Calculated MW	18429
Antigen Region	109-137

Additional Information

Gene ID	2014
Other Names	Epithelial membrane protein 3, EMP-3, Hematopoietic neural membrane protein 1, HNMP-1, Protein YMP, EMP3, YMP
Target/Specificity	This EMP3 antibody is generated from rabbits immunized with a KLH conjugated synthetic peptide between 109-137 amino acids from the C-terminal region of human EMP3.
Dilution	WB~~1:1000 E~~Use at an assay dependent concentration.
Format	Purified polyclonal antibody supplied in PBS with 0.09% (W/V) sodium azide. This antibody is purified through a protein A column, followed by peptide affinity purification.
Storage	Maintain refrigerated at 2-8°C for up to 2 weeks. For long term storage store at -20°C in small aliquots to prevent freeze-thaw cycles.
Precautions	EMP3 Antibody (C-term) is for research use only and not for use in diagnostic or therapeutic procedures.

Protein Information

Name	EMP3
Synonyms	YMP
Function	Probably involved in cell proliferation and cell-cell interactions.

Cellular Location

Membrane; Multi-pass membrane protein.

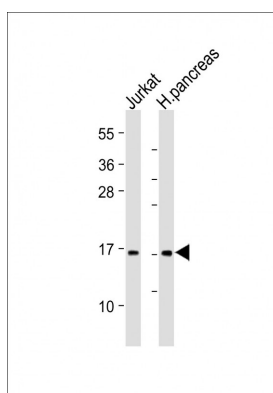
Background

EMP3 is probably involved in cell proliferation and cell-cell interactions.

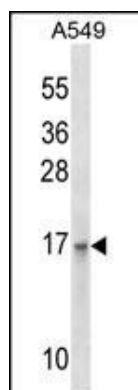
References

Fumoto, S., et al. Cancer Lett. 274(1):25-32(2009)
Zhou, W., et al. J. Korean Med. Sci. 24(1):97-103(2009)
Kunitz, A., et al. Brain Pathol. 17(4):363-370(2007)
Li, K.K., et al. Int. J. Cancer 120(4):947-950(2007)
Nielsen, K., et al. Cornea 24(6):661-668(2005)

Images



All lanes : Anti-EMP3 Antibody (C-term) at 1:1000-1:2000 dilution Lane 1: Jurkat whole cell lysate Lane 2: Human pancreas lysate Lysates/proteins at 20 µg per lane. Secondary Goat Anti-Rabbit IgG, (H+L), Peroxidase conjugated at 1/10000 dilution. Predicted band size : 18 kDa Blocking/Dilution buffer: 5% NFDM/TBST.



EMP3 Antibody (C-term) (Cat. #AP18662b) western blot analysis in A549 cell line lysates (35ug/lane). This demonstrates the EMP3 antibody detected the EMP3 protein (arrow).

Please note: All products are 'FOR RESEARCH USE ONLY. NOT FOR USE IN DIAGNOSTIC OR THERAPEUTIC PROCEDURES'.