

# TBC1D20 Antibody (C-term)

Affinity Purified Rabbit Polyclonal Antibody (Pab)

Catalog # AP18652b

## Product Information

---

Application	WB, E
Primary Accession	<a href="#">Q96BZ9</a>
Other Accession	<a href="#">NP_653229.1</a>
Reactivity	Human
Host	Rabbit
Clonality	Polyclonal
Isotype	Rabbit IgG
Clone Names	RB37370
Calculated MW	45855
Antigen Region	335-363

## Additional Information

---

Gene ID	128637
Other Names	TBC1 domain family member 20, TBC1D20, C20orf140
Target/Specificity	This TBC1D20 antibody is generated from rabbits immunized with a KLH conjugated synthetic peptide between 335-363 amino acids from the C-terminal region of human TBC1D20.
Dilution	WB~~1:1000 E~~Use at an assay dependent concentration.
Format	Purified polyclonal antibody supplied in PBS with 0.09% (W/V) sodium azide. This antibody is purified through a protein A column, followed by peptide affinity purification.
Storage	Maintain refrigerated at 2-8°C for up to 2 weeks. For long term storage store at -20°C in small aliquots to prevent freeze-thaw cycles.
Precautions	TBC1D20 Antibody (C-term) is for research use only and not for use in diagnostic or therapeutic procedures.

## Protein Information

---

Name	TBC1D20 ( <a href="#">HGNC:16133</a> )
Synonyms	C20orf140
Function	GTPase-activating protein (GAP) specific for Rab1 and Rab2 small GTPase families for which it can accelerate the intrinsic GTP hydrolysis rate by more

than five orders of magnitude (PubMed:[23236136](#)). Also shows GAP activity for RAB18 GTPase (PubMed:[26063829](#)). Promotes RAB18 dissociation from the endoplasmic reticulum (ER) membrane into the cytosol, probably through stimulating RAB18 GTP-hydrolysis (PubMed:[26063829](#)). Involved in maintaining endoplasmic reticulum structure (PubMed:[24891604](#)).

#### Cellular Location

Membrane; Multi-pass membrane protein

## Background

---

TBC1D20 may act as a GTPase-activating protein for Rab family protein(s).

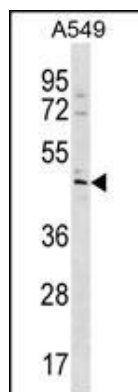
## References

---

Ishibashi, K., et al. Genes Cells 14(1):41-52(2009)  
Sklan, E.H., et al. J. Biol. Chem. 282(50):36354-36361(2007)  
Sklan, E.H., et al. J. Virol. 81(20):11096-11105(2007)  
Deloukas, P., et al. Nature 414(6866):865-871(2001)

## Images

---



TBC1D20 Antibody (C-term) (Cat. #AP18652b) western blot analysis in A549 cell line lysates (35ug/lane). This demonstrates the TBC1D20 antibody detected the TBC1D20 protein (arrow).

Please note: All products are 'FOR RESEARCH USE ONLY. NOT FOR USE IN DIAGNOSTIC OR THERAPEUTIC PROCEDURES'.