

# MYL6 Antibody (Center)

Affinity Purified Rabbit Polyclonal Antibody (Pab)

Catalog # AP18440c

## Product Information

---

<b>Application</b>	WB, E
<b>Primary Accession</b>	<a href="#">P60660</a>
<b>Other Accession</b>	<a href="#">Q64119</a> , <a href="#">P60662</a> , <a href="#">Q60605</a> , <a href="#">P60661</a> , <a href="#">P14649</a> , <a href="#">NP_066299.2</a>
<b>Reactivity</b>	Human
<b>Predicted</b>	Bovine, Mouse, Pig, Rat
<b>Host</b>	Rabbit
<b>Clonality</b>	Polyclonal
<b>Isotype</b>	Rabbit IgG
<b>Clone Names</b>	RB38602
<b>Calculated MW</b>	16930
<b>Antigen Region</b>	32-59

## Additional Information

---

<b>Gene ID</b>	4637
<b>Other Names</b>	Myosin light polypeptide 6, 17 kDa myosin light chain, LC17, Myosin light chain 3, MLC-3, Myosin light chain alkali 3, Myosin light chain A3, Smooth muscle and nonmuscle myosin light chain alkali 6, MYL6
<b>Target/Specificity</b>	This MYL6 antibody is generated from rabbits immunized with a KLH conjugated synthetic peptide between 32-59 amino acids from the Central region of human MYL6.
<b>Dilution</b>	WB~~1:1000 E~~Use at an assay dependent concentration.
<b>Format</b>	Purified polyclonal antibody supplied in PBS with 0.09% (W/V) sodium azide. This antibody is purified through a protein A column, followed by peptide affinity purification.
<b>Storage</b>	Maintain refrigerated at 2-8°C for up to 2 weeks. For long term storage store at -20°C in small aliquots to prevent freeze-thaw cycles.
<b>Precautions</b>	MYL6 Antibody (Center) is for research use only and not for use in diagnostic or therapeutic procedures.

## Protein Information

---

<b>Name</b>	MYL6
<b>Function</b>	Regulatory light chain of myosin. Does not bind calcium.

## Background

---

Myosin is a hexameric ATPase cellular motor protein. It is composed of two heavy chains, two nonphosphorylatable alkali light chains, and two phosphorylatable regulatory light chains. This gene encodes a myosin alkali light chain that is expressed in smooth muscle and non-muscle tissues. Genomic sequences representing several pseudogenes have been described and two transcript variants encoding different isoforms have been identified for this gene.

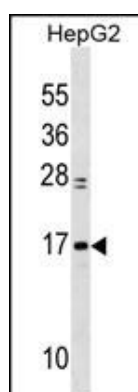
## References

---

Rikova, K., et al. Cell 131(6):1190-1203(2007)  
Lamesch, P., et al. Genomics 89(3):307-315(2007)  
Fu, Z.Y., et al. Acta Biochim. Biophys. Sin. (Shanghai) 38(9):625-632(2006)  
Rush, J., et al. Nat. Biotechnol. 23(1):94-101(2005)  
Webb, R.C. Adv Physiol Educ 27 (1-4), 201-206 (2003) :

## Images

---



MYL6 Antibody (Center) (Cat. #AP18440c) western blot analysis in HepG2 cell line lysates (35ug/lane). This demonstrates the MYL6 Antibody detected the MYL6 protein (arrow).

Please note: All products are 'FOR RESEARCH USE ONLY. NOT FOR USE IN DIAGNOSTIC OR THERAPEUTIC PROCEDURES'.