

ZNF483 Antibody (Center)

Affinity Purified Rabbit Polyclonal Antibody (Pab)

Catalog # AP18428c

Product Information

Application	WB, E
Primary Accession	Q8TF39
Other Accession	NP_597721.2
Reactivity	Human
Host	Rabbit
Clonality	Polyclonal
Isotype	Rabbit IgG
Calculated MW	85098
Antigen Region	281-309

Additional Information

Gene ID	158399
Other Names	Zinc finger protein 483, Zinc finger protein with KRAB and SCAN domains 16, ZNF483, KIAA1962, ZKSCAN16
Target/Specificity	This ZNF483 antibody is generated from rabbits immunized with a KLH conjugated synthetic peptide between 281-309 amino acids from the Central region of human ZNF483.
Dilution	WB~~1:1000 E~~Use at an assay dependent concentration.
Format	Purified polyclonal antibody supplied in PBS with 0.09% (W/V) sodium azide. This antibody is purified through a protein A column, followed by peptide affinity purification.
Storage	Maintain refrigerated at 2-8°C for up to 2 weeks. For long term storage store at -20°C in small aliquots to prevent freeze-thaw cycles.
Precautions	ZNF483 Antibody (Center) is for research use only and not for use in diagnostic or therapeutic procedures.

Protein Information

Name	ZNF483
Synonyms	KIAA1962, ZKSCAN16
Function	May be involved in transcriptional regulation.

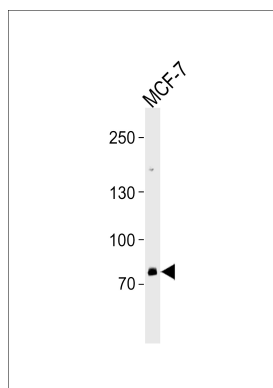
Background

ZNF483 may be involved in transcriptional regulation.

References

Rose, J. Phd, et al. Mol. Med. (2010) In press :

Images



ZNF483 Antibody (Center) (Cat. #AP18428c) western blot analysis in MCF-7 cell line lysates (35ug/lane). This demonstrates the ZNF483 antibody detected the ZNF483 protein (arrow).

Please note: All products are 'FOR RESEARCH USE ONLY. NOT FOR USE IN DIAGNOSTIC OR THERAPEUTIC PROCEDURES'.