

# GIPC3 Antibody (C-term)

Affinity Purified Rabbit Polyclonal Antibody (Pab)

Catalog # AP18407b

## Product Information

---

Application	WB, E
Primary Accession	<a href="#">Q8TF64</a>
Other Accession	<a href="#">NP_573568.1</a>
Reactivity	Human
Host	Rabbit
Clonality	Polyclonal
Isotype	Rabbit IgG
Clone Names	RB38461
Calculated MW	33982
Antigen Region	243-272

## Additional Information

---

Gene ID	126326
Other Names	PDZ domain-containing protein GIPC3, GIPC3, C19orf64
Target/Specificity	This GIPC3 antibody is generated from rabbits immunized with a KLH conjugated synthetic peptide between 243-272 amino acids from the C-terminal region of human GIPC3.
Dilution	WB~~1:1000 E~~Use at an assay dependent concentration.
Format	Purified polyclonal antibody supplied in PBS with 0.09% (W/V) sodium azide. This antibody is purified through a protein A column, followed by peptide affinity purification.
Storage	Maintain refrigerated at 2-8°C for up to 2 weeks. For long term storage store at -20°C in small aliquots to prevent freeze-thaw cycles.
Precautions	GIPC3 Antibody (C-term) is for research use only and not for use in diagnostic or therapeutic procedures.

## Protein Information

---

Name	GIPC3
Synonyms	C19orf64
Function	Required for postnatal maturation of the hair bundle and long-term survival of hair cells and spiral ganglion.

## Tissue Location

Widely expressed in adult and fetal tissues. Highest levels are found in jejunum, lymph node, parietal lobe, fetal spleen and fetal thymus. Expressed in cervical, melanoma, chronic myelogenous and gastric cancer cell lines

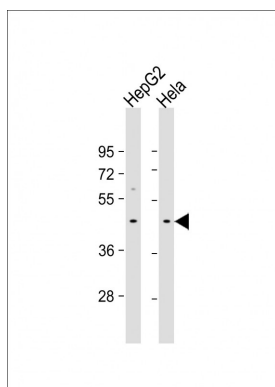
## Background

GIPC3 is widely expressed in adult and fetal tissues. Highest levels are found in jejunum, lymph node, parietal lobe, fetal spleen and fetal thymus. It is expressed in cervical, melanoma, chronic myelogenous and gastric cancer cell lines.

## References

Vega, A., et al. Gynecol. Oncol. 112(1):210-214(2009)  
Matsuoka, S., et al. Science 316(5828):1160-1166(2007)  
Grimwood, J., et al. Nature 428(6982):529-535(2004)  
Katoh, M. Int. J. Mol. Med. 9(6):585-589(2002)  
Saitoh, T., et al. Int. J. Oncol. 20(3):577-582(2002)

## Images



All lanes : Anti-GIPC3 Antibody (C-term) at 1:1000 dilution  
Lane 1: HepG2 whole cell lysate Lane 2: HeLa whole cell lysate  
Lysates/proteins at 20 µg per lane. Secondary Goat Anti-Rabbit IgG, (H+L), Peroxidase conjugated at 1/10000 dilution. Predicted band size : 34 kDa  
Blocking/Dilution buffer: 5% NFDM/TBST.

Please note: All products are 'FOR RESEARCH USE ONLY. NOT FOR USE IN DIAGNOSTIC OR THERAPEUTIC PROCEDURES'.