

# FRMD8 Antibody (N-term)

Affinity Purified Rabbit Polyclonal Antibody (Pab)

Catalog # AP18270a

## Product Information

---

<b>Application</b>	WB, E
<b>Primary Accession</b>	<a href="#">Q9BZ67</a>
<b>Other Accession</b>	<a href="#">Q5U2R3</a> , <a href="#">Q3U FK8</a> , <a href="#">NP_114110.1</a>
<b>Reactivity</b>	Human
<b>Predicted</b>	Mouse, Rat
<b>Host</b>	Rabbit
<b>Clonality</b>	Polyclonal
<b>Isotype</b>	Rabbit IgG
<b>Clone Names</b>	RB38254
<b>Calculated MW</b>	51218
<b>Antigen Region</b>	74-100

## Additional Information

---

<b>Gene ID</b>	83786
<b>Other Names</b>	FERM domain-containing protein 8, FRMD8
<b>Target/Specificity</b>	This FRMD8 antibody is generated from rabbits immunized with a KLH conjugated synthetic peptide between 74-100 amino acids from the N-terminal region of human FRMD8.
<b>Dilution</b>	WB~~1:1000 E~~Use at an assay dependent concentration.
<b>Format</b>	Purified polyclonal antibody supplied in PBS with 0.09% (W/V) sodium azide. This antibody is purified through a protein A column, followed by peptide affinity purification.
<b>Storage</b>	Maintain refrigerated at 2-8°C for up to 2 weeks. For long term storage store at -20°C in small aliquots to prevent freeze-thaw cycles.
<b>Precautions</b>	FRMD8 Antibody (N-term) is for research use only and not for use in diagnostic or therapeutic procedures.

## Protein Information

---

<b>Name</b>	FRMD8
<b>Function</b>	Promotes the cell surface stability of iRhom1/RHBDF1 and iRhom2/RHBDF2 and prevents their degradation via the endolysosomal pathway. By acting on iRhoms, involved in ADAM17-mediated shedding of TNF, amphiregulin/AREG,

HBEGF and TGFA from the cell surface (PubMed:[29897333](#), PubMed:[29897336](#)). Negatively regulates Wnt signaling, possibly by antagonizing the recruitment of AXIN1 to LRP6 (PubMed:[19572019](#)).

**Cellular Location** Cytoplasm, cytosol. Cell membrane

**Tissue Location** Widely expressed, with high expression in heart and spleen.

## Background

---

The function of this protein remains unknown.

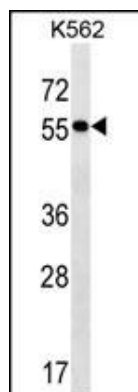
## References

---

Barbe, L., et al. Mol. Cell Proteomics 7(3):499-508(2008)

## Images

---



FRMD8 Antibody (N-term) (Cat. #AP18270a) western blot analysis in K562 cell line lysates (35ug/lane). This demonstrates the FRMD8 antibody detected the FRMD8 protein (arrow).

Please note: All products are 'FOR RESEARCH USE ONLY. NOT FOR USE IN DIAGNOSTIC OR THERAPEUTIC PROCEDURES'.