

# LAMP1 Antibody (N-term)

Affinity Purified Rabbit Polyclonal Antibody (Pab)  
Catalog # AP1823a

## Product Information

---

<b>Application</b>	WB, IHC-P, E
<b>Primary Accession</b>	<a href="#">P11279</a>
<b>Reactivity</b>	Human, Mouse
<b>Host</b>	Rabbit
<b>Clonality</b>	Polyclonal
<b>Isotype</b>	Rabbit IgG
<b>Calculated MW</b>	44882
<b>Antigen Region</b>	125-154

## Additional Information

---

<b>Gene ID</b>	3916
<b>Other Names</b>	Lysosome-associated membrane glycoprotein 1, LAMP-1, Lysosome-associated membrane protein 1, CD107 antigen-like family member A, CD107a, LAMP1
<b>Target/Specificity</b>	This LAMP1 antibody is generated from rabbits immunized with a KLH conjugated synthetic peptide between 125-154 amino acids from the N-terminal region of human LAMP1.
<b>Dilution</b>	WB~~1:1000 IHC-P~~1:100~500 E~~Use at an assay dependent concentration.
<b>Format</b>	Purified polyclonal antibody supplied in PBS with 0.09% (W/V) sodium azide. This antibody is purified through a protein A column, followed by peptide affinity purification.
<b>Storage</b>	Maintain refrigerated at 2-8°C for up to 2 weeks. For long term storage store at -20°C in small aliquots to prevent freeze-thaw cycles.
<b>Precautions</b>	LAMP1 Antibody (N-term) is for research use only and not for use in diagnostic or therapeutic procedures.

## Protein Information

---

<b>Name</b>	LAMP1 {ECO:0000303   PubMed:23632890, ECO:0000312   HGNC:HGNC:6499}
<b>Function</b>	Lysosomal membrane glycoprotein which plays an important role in lysosome biogenesis, lysosomal pH regulation, autophagy and cholesterol homeostasis (PubMed: <a href="#">37390818</a> ). Acts as an important regulator of lysosomal lumen pH regulation by acting as a direct inhibitor of the proton channel

TMEM175, facilitating lysosomal acidification for optimal hydrolase activity (PubMed:[37390818](#)). Also plays an important role in NK-cells cytotoxicity (PubMed:[2022921](#), PubMed:[23632890](#)). Mechanistically, participates in cytotoxic granule movement to the cell surface and perforin trafficking to the lytic granule (PubMed:[23632890](#)). In addition, protects NK-cells from degranulation-associated damage induced by their own cytotoxic granule content (PubMed:[23847195](#)). Presents carbohydrate ligands to selectins (PubMed:[7685349](#)).

## Cellular Location

Lysosome membrane; Single-pass type I membrane protein. Endosome membrane; Single-pass type I membrane protein. Late endosome membrane; Single-pass type I membrane protein. Cell membrane; Single-pass type I membrane protein. Cytolytic granule membrane; Single-pass type I membrane protein. Note=This protein shuttles between lysosomes, endosomes, and the plasma membrane (By similarity). Colocalizes with OSBPL1A at the late endosome (PubMed:16176980).  
{ECO:0000250|UniProtKB:P05300, ECO:0000269|PubMed:16176980, ECO:0000269|PubMed:17897319}

## Background

LAMP1 is a member of a family of membrane glycoproteins. This glycoprotein provides selectins with carbohydrate ligands. It may also play a role in tumor cell metastasis.

## References

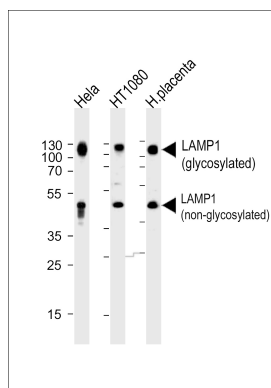
References for protein:

- 1.Fukuda M., J. Biol. Chem. 263:18920-18928(1988).
- 2.Sawada R., J. Biol. Chem. 268:9014-9022(1993).

References for U251 cell line:

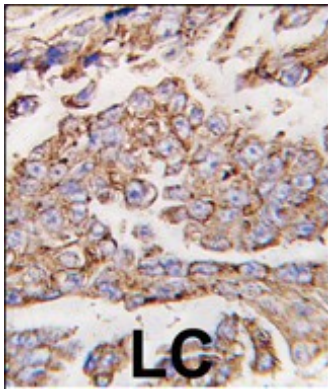
1. Westermark B.; Pontén J.; Hugosson R. (1973).” Determinants for the establishment of permanent tissue culture lines from human gliomas”. Acta Pathol Microbiol Scand A. 81:791-805. [PMID: 4359449].
2. Pontén, J.,Westermark B. (1978).” Properties of Human Malignant Glioma Cells in Vitro”. Medical Biology 56: 184-193.[PMID: 359950].
3. Geng Y.;Kohli L.; Klocke B.J.; Roth K.A.(2010). “Chloroquine-induced autophagic vacuole accumulation and cell death in glioma cells is p53 independent”. Neuro Oncol. 12(5): 473-481.[ PMID: 20406898].

## Images



Western blot analysis of lysates from HeLa,HT1080 cell line and human placenta tissue (from left to right),using LAMP1 Antibody (N-term)(Cat. #AP1823a).AP1823a was diluted at 1:1000 at each lane. A goat anti-rabbit IgG H&L(HRP) at 1:5000 dilution was used as the secondary antibody.Lysates at 35ug per lane.

Formalin-fixed and paraffin-embedded human lung carcinoma tissue reacted with \*LAMP1 antibody (N-term)



(Cat.#AP1823a), which was peroxidase-conjugated to the secondary antibody, followed by DAB staining. This data demonstrates the use of this antibody for immunohistochemistry; clinical relevance has not been evaluated.

## Citations

---

- [The Rac1/MKK7/JNK pathway signals upregulation of Atg5 and subsequent autophagic cell death in response to oncogenic Ras.](#)
- [Granulovacuolar degeneration \(GVD\) bodies of Alzheimer's disease \(AD\) resemble late-stage autophagic organelles.](#)
- [A rapid method to improve protein detection by indirect ELISA.](#)
- [Involvement of autophagy in oncogenic K-Ras-induced malignant cell transformation.](#)
- [Helicobacter pylori cholesterol glucosylation modulates autophagy for increasing intracellular survival in macrophages.](#)
- [The role of lysosomes and autophagosomes in Frontotemporal Lobar Degeneration.](#)

Please note: All products are 'FOR RESEARCH USE ONLY. NOT FOR USE IN DIAGNOSTIC OR THERAPEUTIC PROCEDURES'.