

IFNA1 Antibody (C-term)

Affinity Purified Rabbit Polyclonal Antibody (Pab)

Catalog # AP18129b

Product Information

Application	WB, FC, E
Primary Accession	P01562
Other Accession	NP_008831.3
Reactivity	Human
Host	Rabbit
Clonality	Polyclonal
Isotype	Rabbit IgG
Clone Names	RB21762
Calculated MW	21725
Antigen Region	164-189

Additional Information

Gene ID	3439;3447
Other Names	Interferon alpha-1/13, IFN-alpha-1/13, Interferon alpha-D, LeIF D, IFNA1
Target/Specificity	This IFNA1 antibody is generated from rabbits immunized with a KLH conjugated synthetic peptide between 164-189 amino acids from the C-terminal region of human IFNA1.
Dilution	WB~~1:2000 FC~~1:25 E~~Use at an assay dependent concentration.
Format	Purified polyclonal antibody supplied in PBS with 0.09% (W/V) sodium azide. This antibody is purified through a protein A column, followed by peptide affinity purification.
Storage	Maintain refrigerated at 2-8°C for up to 2 weeks. For long term storage store at -20°C in small aliquots to prevent freeze-thaw cycles.
Precautions	IFNA1 Antibody (C-term) is for research use only and not for use in diagnostic or therapeutic procedures.

Protein Information

Name	IFNA1
Function	Produced by macrophages, IFN-alpha have antiviral activities. Interferon stimulates the production of two enzymes: a protein kinase and an oligoadenylate synthetase.

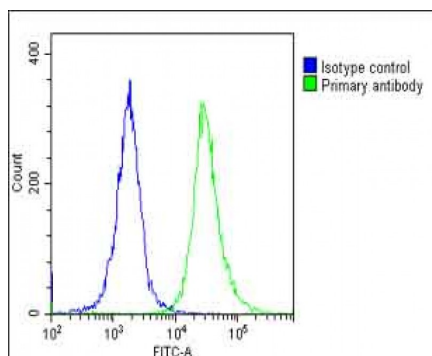
Background

IFNA1 is produced by macrophages, IFN-alpha have antiviral activities. Interferon stimulates the production of two enzymes: a protein kinase and an oligoadenylate synthetase.

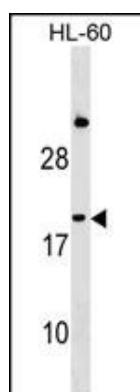
References

Silva, L.K., et al. Eur. J. Hum. Genet. 18(11):1221-1227(2010)
Schuurhof, A., et al. Pediatr. Pulmonol. 45(6):608-613(2010)
Davila, S., et al. Genes Immun. 11(3):232-238(2010)
Siezen, C.L., et al. Pediatr. Infect. Dis. J. 28(4):333-335(2009)
Janssen, R., et al. J. Infect. Dis. 196(6):826-834(2007)

Images



Overlay histogram showing HeLa cells stained with AP18129b(green line). The cells were fixed with 2% paraformaldehyde (10 min) and then permeabilized with 90% methanol for 10 min. The cells were then incubated in 2% bovine serum albumin to block non-specific protein-protein interactions followed by the antibody (AP18129b, 1:25 dilution) for 60 min at 37°C. The secondary antibody used was Goat-Anti-Rabbit IgG, DyLight® 488 Conjugated Highly Cross-Adsorbed(1583138) at 1/200 dilution for 40 min at 37°C. Isotype control antibody (blue line) was rabbit IgG1 (1µg/1x10⁶ cells) used under the same conditions. Acquisition of >10, 000 events was performed.



IFNA1 Antibody (C-term) (Cat. #AP18129b) western blot analysis in HL-60 cell line lysates (35ug/lane). This demonstrates the IFNA1 antibody detected the IFNA1 protein (arrow).

Please note: All products are 'FOR RESEARCH USE ONLY. NOT FOR USE IN DIAGNOSTIC OR THERAPEUTIC PROCEDURES'.