

GPT2 Antibody (N-term)

Affinity Purified Rabbit Polyclonal Antibody (Pab)

Catalog # AP18028a

Product Information

Application	WB, E
Primary Accession	Q8TD30
Other Accession	NP_001135938.1
Reactivity	Human, Mouse
Host	Rabbit
Clonality	Polyclonal
Isotype	Rabbit IgG
Clone Names	RB26857
Calculated MW	57904
Antigen Region	15-44

Additional Information

Gene ID	84706
Other Names	Alanine aminotransferase 2, ALT2, Glutamate pyruvate transaminase 2, GPT 2, Glutamic--alanine transaminase 2, Glutamic--pyruvic transaminase 2, GPT2, AAT2, ALT2
Target/Specificity	This GPT2 antibody is generated from rabbits immunized with a KLH conjugated synthetic peptide between 15-44 amino acids from the N-terminal region of human GPT2.
Dilution	WB~~1:1000 E~~Use at an assay dependent concentration.
Format	Purified polyclonal antibody supplied in PBS with 0.09% (W/V) sodium azide. This antibody is purified through a protein A column, followed by peptide affinity purification.
Storage	Maintain refrigerated at 2-8°C for up to 2 weeks. For long term storage store at -20°C in small aliquots to prevent freeze-thaw cycles.
Precautions	GPT2 Antibody (N-term) is for research use only and not for use in diagnostic or therapeutic procedures.

Protein Information

Name	GPT2
Synonyms	AAT2, ALT2

Function	Catalyzes the reversible transamination between alanine and 2-oxoglutarate to form pyruvate and glutamate.
Tissue Location	Expressed at high levels in muscle, adipose tissue, kidney and brain and at lower levels in the liver and breast

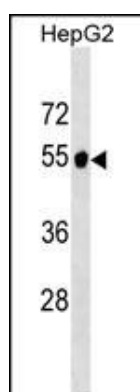
Background

GPT (MIM 138200) and GPT2 (EC 2.6.1.2), also known as alanine transaminases, are pyridoxal enzymes that catalyze the reversible transamination between alanine and 2-oxoglutarate to form pyruvate and glutamate. By mediating the conversion of these 4 major intermediate metabolites, these transaminases have roles in gluconeogenesis and in amino acid metabolism.

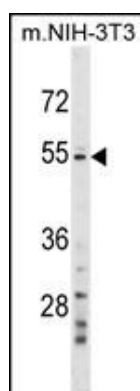
References

Glinghammar, B., et al. Int. J. Mol. Med. 23(5):621-631(2009)
 Fraser, A., et al. Hepatology 46(1):158-165(2007)
 Ding, Y., et al. World J. Gastroenterol. 12(43):7038-7041(2006)
 Martin, J., et al. Nature 432(7020):988-994(2004)
 Yang, R.Z., et al. Genomics 79(3):445-450(2002)

Images



GPT2 Antibody (N-term) (Cat. #AP18028a) western blot analysis in HepG2 cell line lysates (35ug/lane). This demonstrates the GPT2 antibody detected the GPT2 protein (arrow).



GPT2 Antibody (N-term) (Cat. #AP18028a) western blot analysis in mouse NIH-3T3 cell line lysates (35ug/lane). This demonstrates the GPT2 antibody detected the GPT2 protein (arrow).

Citations

- [Liver alanine catabolism promotes skeletal muscle atrophy and hyperglycaemia in type 2 diabetes](#)
- [Clinical-Grade Peptide-Based Inhibition of CK2 Blocks Viability and Proliferation of T-ALL Cells and Counteracts IL-7 Stimulation and Stromal Support](#)

Please note: All products are 'FOR RESEARCH USE ONLY. NOT FOR USE IN DIAGNOSTIC OR THERAPEUTIC PROCEDURES'.