

ADM2 Antibody (N-term)

Affinity Purified Rabbit Polyclonal Antibody (Pab)

Catalog # AP18001a

Product Information

Application	WB, E
Primary Accession	Q7Z4H4
Other Accession	NP_079142.2
Reactivity	Human
Host	Rabbit
Clonality	Polyclonal
Isotype	Rabbit IgG
Clone Names	RB22136
Calculated MW	15865
Antigen Region	15-42

Additional Information

Gene ID	79924
Other Names	ADM2, Intermedin, Adrenomedullin-2, AM2, Intermedin-long, IMDL, Intermedin-short, IMDS, ADM2, AM2
Target/Specificity	This ADM2 antibody is generated from rabbits immunized with a KLH conjugated synthetic peptide between 15-42 amino acids of human ADM2.
Dilution	WB~~1:1000 E~~Use at an assay dependent concentration.
Format	Purified polyclonal antibody supplied in PBS with 0.09% (W/V) sodium azide. This antibody is purified through a protein A column, followed by peptide affinity purification.
Storage	Maintain refrigerated at 2-8°C for up to 2 weeks. For long term storage store at -20°C in small aliquots to prevent freeze-thaw cycles.
Precautions	ADM2 Antibody (N-term) is for research use only and not for use in diagnostic or therapeutic procedures.

Protein Information

Name	ADM2 (HGNC:28898)
Synonyms	AM2
Function	Intermedin/ADM2 is a peptide hormone that plays a role as physiological regulator of gastrointestinal and cardiovascular bioactivities mediated by the

CALCRL-RAMPs receptor complexes (PubMed:[14615490](#)). Activates the cAMP-dependent pathway through interaction with CALCRL-RAMP3 receptor complex (PubMed:[14615490](#)).

Cellular Location

Secreted.

Tissue Location

Expressed in the esophagus, stomach, jejunum, ileum, ileocecum, ascending colon, transverse colon, descending colon and rectum. Expressed in myocardial cells of the heart, renal tubular cells, hypothalamus, and pituitary.

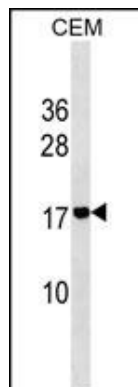
Background

ADM2 belongs to a family of calcitonin (MIM 114130)-related peptide hormones important for regulating diverse physiologic functions and the chemical composition of fluids and tissues.

References

- Cai, Y., et al. Cardiovasc. Res. 85(4):864-873(2010)
Pfeil, U., et al. Am. J. Physiol. Lung Cell Mol. Physiol. 297 (5), L837-L845 (2009) :
Chauhan, M., et al. Biol. Reprod. 81(4):777-783(2009)
Smith, R.S. Jr., et al. Am. J. Physiol. Heart Circ. Physiol. 297 (3), H1040-H1047 (2009) :
Pearson, L.J., et al. Cell. Physiol. Biochem. 23 (1-3), 97-108 (2009) :

Images



ADM2 Antibody (N-term) (Cat. #AP18001a) western blot analysis in CEM cell line lysates (35ug/lane). This demonstrates the ADM2 antibody detected the ADM2 protein (arrow).

Please note: All products are 'FOR RESEARCH USE ONLY. NOT FOR USE IN DIAGNOSTIC OR THERAPEUTIC PROCEDURES'.