

LGALS8 Antibody (C-term)

Affinity Purified Rabbit Polyclonal Antibody (Pab)

Catalog # AP17988b

Product Information

Application	WB, E
Primary Accession	O00214
Other Accession	NP_963837
Reactivity	Human, Rat, Mouse
Host	Rabbit
Clonality	Polyclonal
Isotype	Rabbit IgG
Clone Names	RB20572
Calculated MW	35808
Antigen Region	271-298

Additional Information

Gene ID	3964
Other Names	Galectin-8, Gal-8, Po66 carbohydrate-binding protein, Po66-CBP, Prostate carcinoma tumor antigen 1, PCTA-1, LGALS8
Target/Specificity	This LGALS8 antibody is generated from rabbits immunized with a KLH conjugated synthetic peptide between 271-298 amino acids from the C-terminal region of human LGALS8.
Dilution	WB~~1:1000 E~~Use at an assay dependent concentration.
Format	Purified polyclonal antibody supplied in PBS with 0.09% (W/V) sodium azide. This antibody is purified through a protein A column, followed by peptide affinity purification.
Storage	Maintain refrigerated at 2-8°C for up to 2 weeks. For long term storage store at -20°C in small aliquots to prevent freeze-thaw cycles.
Precautions	LGALS8 Antibody (C-term) is for research use only and not for use in diagnostic or therapeutic procedures.

Protein Information

Name	LGALS8 (HGNC:6569)
Function	Beta-galactoside-binding lectin that acts as a sensor of membrane damage caused by infection and restricts the proliferation of infecting pathogens by targeting them for autophagy (PubMed: 22246324 , PubMed: 28077878).

Detects membrane rupture by binding beta-galactoside ligands located on the luminal side of the endosome membrane; these ligands becoming exposed to the cytoplasm following rupture (PubMed:[22246324](#), PubMed:[28077878](#)). Restricts infection by initiating autophagy via interaction with CALCOCO2/NDP52 (PubMed:[22246324](#), PubMed:[28077878](#)). Required to restrict infection of bacterial invasion such as *S.typhimurium* (PubMed:[22246324](#)). Also required to restrict infection of Picornaviridae viruses (PubMed:[28077878](#)). Has a marked preference for 3'-O-sialylated and 3'-O-sulfated glycans (PubMed:[21288902](#)).

Cellular Location

Cytoplasmic vesicle. Cytoplasm, cytosol

Tissue Location

Ubiquitous. Selective expression by prostate carcinomas versus normal prostate and benign prostatic hypertrophy

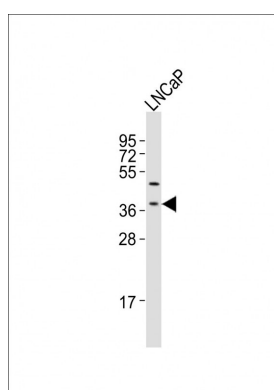
Background

This gene encodes a member of the galectin family. Galectins are beta-galactoside-binding animal lectins with conserved carbohydrate recognition domains. The galectins have been implicated in many essential functions including development, differentiation, cell-cell adhesion, cell-matrix interaction, growth regulation, apoptosis, and RNA splicing. This gene is widely expressed in tumoral tissues and seems to be involved in integrin-like cell interactions. Alternatively spliced transcript variants encoding different isoforms have been identified.

References

Cludts, S., et al. *Anticancer Res.* 29(12):4933-4940(2009)
Cueni, L.N., et al. *Exp. Cell Res.* 315(10):1715-1723(2009)
Yoshida, H., et al. *Acta Crystallogr. Sect. F Struct. Biol. Cryst. Commun.* 65 (PT 5), 512-514 (2009) :
Massardo, L., et al. *Lupus* 18(6):539-546(2009)
Savin, S., et al. *Med. Oncol.* 26(3):314-318(2009)

Images



Anti-LGALS8 Antibody (C-term) at 1:2000 dilution + LNCaP whole cell lysates. Lysates/proteins at 20 µg per lane. Secondary Goat Anti-Rabbit IgG, (H+L), Peroxidase conjugated at 1/10000 dilution. Predicted band size : 36 kDa. Blocking/Dilution buffer: 5% NFDM/TBST.

Please note: All products are 'FOR RESEARCH USE ONLY. NOT FOR USE IN DIAGNOSTIC OR THERAPEUTIC PROCEDURES'.