

CD200 Antibody (C-term)

Affinity Purified Rabbit Polyclonal Antibody (Pab)

Catalog # AP17788b

Product Information

Application	WB, E
Primary Accession	P41217
Other Accession	NP_005935.4
Reactivity	Human
Host	Rabbit
Clonality	Polyclonal
Isotype	Rabbit IgG
Clone Names	RB34100
Calculated MW	31264
Antigen Region	183-211

Additional Information

Gene ID	4345
Other Names	OX-2 membrane glycoprotein, CD200, CD200, MOX1, MOX2
Target/Specificity	This CD200 antibody is generated from rabbits immunized with a KLH conjugated synthetic peptide between 183-211 amino acids from the C-terminal region of human CD200.
Dilution	WB~~1:1000 E~~Use at an assay dependent concentration.
Format	Purified polyclonal antibody supplied in PBS with 0.09% (W/V) sodium azide. This antibody is purified through a protein A column, followed by peptide affinity purification.
Storage	Maintain refrigerated at 2-8°C for up to 2 weeks. For long term storage store at -20°C in small aliquots to prevent freeze-thaw cycles.
Precautions	CD200 Antibody (C-term) is for research use only and not for use in diagnostic or therapeutic procedures.

Protein Information

Name	CD200
Synonyms	MOX1, MOX2
Function	Costimulates T-cell proliferation. May regulate myeloid cell activity in a variety of tissues.

Background

The protein encoded by this gene is a type-1 membrane glycoprotein, which contains two immunoglobulin domains, and thus belongs to the immunoglobulin superfamily. Studies of the related genes in mouse and rat suggest that this gene may regulate myeloid cell activity and delivers an inhibitory signal for the macrophage lineage in diverse tissues. Multiple alternatively spliced transcript variants that encode different isoforms have been found for this gene.

References

Dorfman, D.M., et al. Am. J. Clin. Pathol. 134(5):726-733(2010)

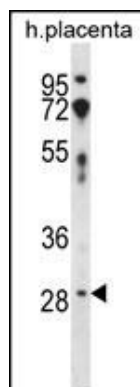
Wong, K.K., et al. J. Leukoc. Biol. 88(2):361-372(2010)

Rose, J.E., et al. Mol. Med. 16 (7-8), 247-253 (2010) :

Koning, N., et al. J Innate Immun 2(2):195-200(2010)

Rittie, L., et al. Aging Cell 8(6):738-751(2009)

Images



CD200 Antibody (C-term) (Cat. #AP17788b) western blot analysis in human placenta tissue lysates (35ug/lane). This demonstrates the CD200 antibody detected the CD200 protein (arrow).

Please note: All products are 'FOR RESEARCH USE ONLY. NOT FOR USE IN DIAGNOSTIC OR THERAPEUTIC PROCEDURES'.