

TRIM75 Antibody (Center)

Affinity Purified Rabbit Polyclonal Antibody (Pab)
Catalog # AP17773c

Product Information

| | |
|--------------------------|------------------------|
| Application | WB, E |
| Primary Accession | A6NK02 |
| Reactivity | Human |
| Host | Rabbit |
| Clonality | Polyclonal |
| Isotype | Rabbit IgG |
| Clone Names | RB31001 |
| Antigen Region | 295-324 |

Additional Information

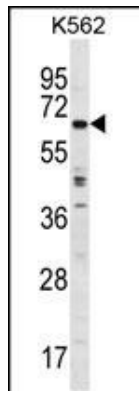
| | |
|---------------------------|--|
| Other Names | Putative tripartite motif-containing protein 75, Tripartite motif-containing protein 75 pseudogene, TRIM75P, TRIM75 |
| Target/Specificity | This TRIM75 antibody is generated from rabbits immunized with a KLH conjugated synthetic peptide between 295-324 amino acids from the Central region of human TRIM75. |
| Dilution | WB~~1:1000 E~~Use at an assay dependent concentration. |
| Format | Purified polyclonal antibody supplied in PBS with 0.09% (W/V) sodium azide. This antibody is purified through a protein A column, followed by peptide affinity purification. |
| Storage | Maintain refrigerated at 2-8°C for up to 2 weeks. For long term storage store at -20°C in small aliquots to prevent freeze-thaw cycles. |
| Precautions | TRIM75 Antibody (Center) is for research use only and not for use in diagnostic or therapeutic procedures. |

Protein Information

Background

The function of this protein remains unknown.

Images



analysis in K562 cell line lysates (35ug/lane). This demonstrates the TRIM75 antibody detected the TRIM75 protein (arrow).

Please note: All products are 'FOR RESEARCH USE ONLY. NOT FOR USE IN DIAGNOSTIC OR THERAPEUTIC PROCEDURES'.