

NXNL1 Antibody (Center)

Affinity Purified Rabbit Polyclonal Antibody (Pab)
Catalog # AP17740c

Product Information

Application	WB, E
Primary Accession	Q96CM4
Other Accession	NP_612463.1
Reactivity	Human
Host	Rabbit
Clonality	Polyclonal
Isotype	Rabbit IgG
Clone Names	RB37948
Calculated MW	23943
Antigen Region	94-121

Additional Information

Gene ID	115861
Other Names	Nucleoredoxin-like protein 1, Thioredoxin-like protein 6, NXNL1, TXNL6
Target/Specificity	This NXNL1 antibody is generated from rabbits immunized with a KLH conjugated synthetic peptide between 94-121 amino acids from the Central region of human NXNL1.
Dilution	WB~~1:1000 E~~Use at an assay dependent concentration.
Format	Purified polyclonal antibody supplied in PBS with 0.09% (W/V) sodium azide. This antibody is purified through a protein A column, followed by peptide affinity purification.
Storage	Maintain refrigerated at 2-8°C for up to 2 weeks. For long term storage store at -20°C in small aliquots to prevent freeze-thaw cycles.
Precautions	NXNL1 Antibody (Center) is for research use only and not for use in diagnostic or therapeutic procedures.

Protein Information

Name	NXNL1
Synonyms	Rdcvf, TXNL6
Function	[Isoform 1]: Thioredoxin-like protein that protects retinal rod and cone photoreceptors against oxidative stress and photo-oxidative damage. Plays a

role in the inhibition of TAU phosphorylation and protects TAU against oxidative stress in the retina (By similarity). Acts as a reducing system for MSRA, facilitating the repair of oxidized proteins such as alpha-crystallin (CRYAA/CRYAB) and cytochrome c (CYCS) in the lens during oxidative stress conditions (PubMed:[21079812](#)).

Cellular Location

[Isoform 1]: Cytoplasm. Mitochondrion

Tissue Location

[Isoform 1]: Expressed in the lens epithelium and fiber cells (at protein level). Expressed in the retina, stomach, kidney, heart, colon, and spleen.

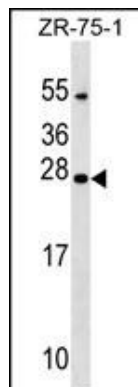
Background

NXNL1 may play a role in cone cell viability, slowing down cone degeneration, does not seem to play a role in degenerating rods (By similarity).

References

Reichman, S., et al. Hum. Mol. Genet. 19(2):250-261(2010)
Bin, J., et al. Hum. Mutat. 30 (7), E737-E746 (2009) :
Wang, X.W., et al. Free Radic. Biol. Med. 45(3):336-344(2008)
Lamesch, P., et al. Genomics 89(3):307-315(2007)
Roni, V., et al. BMC Genomics 8, 42 (2007) :

Images



NXNL1 Antibody (Center) (Cat. #AP17740c) western blot analysis in ZR-75-1 cell line lysates (35ug/lane). This demonstrates the NXNL1 antibody detected the NXNL1 protein (arrow).

Please note: All products are 'FOR RESEARCH USE ONLY. NOT FOR USE IN DIAGNOSTIC OR THERAPEUTIC PROCEDURES'.