

# LZIC Antibody (Center)

Affinity Purified Rabbit Polyclonal Antibody (Pab)

Catalog # AP17735c

## Product Information

---

<b>Application</b>	IF, WB, FC, IHC-P-Leica, E
<b>Primary Accession</b>	<a href="#">Q8WZA0</a>
<b>Other Accession</b>	<a href="#">Q5PQN7</a> , <a href="#">Q8K3C3</a> , <a href="#">Q6DHH7</a> , <a href="#">NP_115744.2</a>
<b>Reactivity</b>	Human, Rat
<b>Predicted</b>	Zebrafish, Mouse, Rat
<b>Host</b>	Rabbit
<b>Clonality</b>	Polyclonal
<b>Isotype</b>	Rabbit IgG
<b>Clone Names</b>	RB37935
<b>Calculated MW</b>	21495
<b>Antigen Region</b>	81-109

## Additional Information

---

<b>Gene ID</b>	84328
<b>Other Names</b>	Protein LZIC, Leucine zipper and CTNNBIP1 domain-containing protein, Leucine zipper and ICAT homologous domain-containing protein, LZIC
<b>Target/Specificity</b>	This LZIC antibody is generated from rabbits immunized with a KLH conjugated synthetic peptide between 81-109 amino acids from the Central region of human LZIC.
<b>Dilution</b>	IF~~1:25 WB~~1:2000 FC~~1:25 IHC-P-Leica~~1:500 E~~Use at an assay dependent concentration.
<b>Format</b>	Purified polyclonal antibody supplied in PBS with 0.09% (W/V) sodium azide. This antibody is purified through a protein A column, followed by peptide affinity purification.
<b>Storage</b>	Maintain refrigerated at 2-8°C for up to 2 weeks. For long term storage store at -20°C in small aliquots to prevent freeze-thaw cycles.
<b>Precautions</b>	LZIC Antibody (Center) is for research use only and not for use in diagnostic or therapeutic procedures.

## Protein Information

---

<b>Name</b>	LZIC
<b>Tissue Location</b>	Ubiquitously expressed, with highest levels in kidney. Up-regulated in several

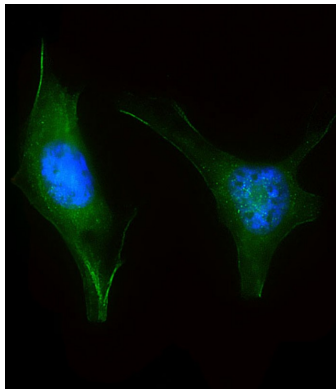
## Background

LZIC belongs to the CTNNBIP1 family. It is ubiquitously expressed with highest levels in kidney. LZIC is up-regulated in several cases of gastric cancers.

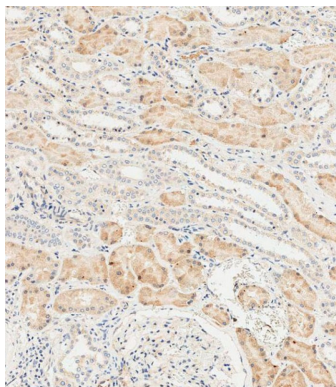
## References

Bailey, S.D., et al. Diabetes Care 33(10):2250-2253(2010)  
Talmud, P.J., et al. Am. J. Hum. Genet. 85(5):628-642(2009)  
Lamesch, P., et al. Genomics 89(3):307-315(2007)  
Katoh, M. Int. J. Mol. Med. 8(6):611-615(2001)

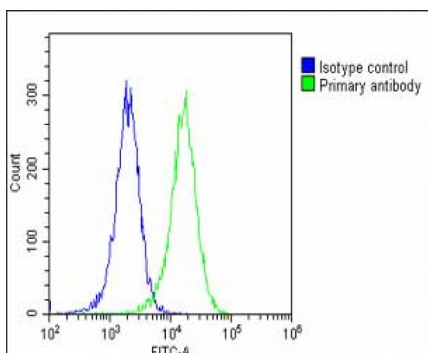
## Images



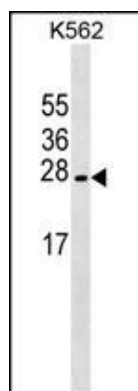
Immunofluorescent analysis of 4% paraformaldehyde-fixed, 0.1% Triton X-100 permeabilized HeLa cells labeling LZIC with AP17735 at 1/25 dilution, followed by Dylight® 488-conjugated goat anti-Rabbit IgG secondary antibody at 1/200 dilution (green). Immunofluorescence image showing Nucleus and Cytoplasm, Weak Membrane staining on HeLa cell line. The nuclear counter stain is DAPI (blue).



Immunohistochemical analysis of paraffin-embedded human kidney tissue using AP17735 performed on the Leica® BOND RXm. Samples were incubated with primary antibody (1/500) for 1 hour at room temperature. A undiluted biotinylated CRF Anti-Polyvalent HRP Polymer antibody was used as the secondary antibody.



Overlay histogram showing HeLa cells stained with AP17735c (green line). The cells were fixed with 2% paraformaldehyde (10 min) and then permeabilized with 90% methanol for 10 min. The cells were then incubated in 2% bovine serum albumin to block non-specific protein-protein interactions followed by the antibody (AP17735c, 1:25 dilution) for 60 min at 37°C. The secondary antibody used was Goat-Anti-Rabbit IgG, DyLight® 488 Conjugated Highly Cross-Adsorbed (1583138) at 1/200 dilution for 40 min at 37°C. Isotype control antibody (blue line) was rabbit IgG1 (1 µg/1x10<sup>6</sup> cells) used under the same conditions. Acquisition of >10,000 events was performed.



LZIC Antibody (Center) (Cat. #AP17735c) western blot analysis in K562 cell line lysates (35ug/lane). This demonstrates the LZIC antibody detected the LZIC protein (arrow).

Please note: All products are 'FOR RESEARCH USE ONLY. NOT FOR USE IN DIAGNOSTIC OR THERAPEUTIC PROCEDURES'.