

# NKX3-2 Antibody (Center)

Affinity Purified Rabbit Polyclonal Antibody (Pab)

Catalog # AP17702c

## Product Information

---

<b>Application</b>	WB, E
<b>Primary Accession</b>	<a href="#">P78367</a>
<b>Other Accession</b>	<a href="#">P70061</a> , <a href="#">P97503</a> , <a href="#">NP_001180.1</a>
<b>Reactivity</b>	Human, Mouse
<b>Predicted</b>	Mouse, Xenopus
<b>Host</b>	Rabbit
<b>Clonality</b>	Polyclonal
<b>Isotype</b>	Rabbit IgG
<b>Calculated MW</b>	34814
<b>Antigen Region</b>	3-2

## Additional Information

---

<b>Gene ID</b>	579
<b>Other Names</b>	Homeobox protein Nkx-32, Bagpipe homeobox protein homolog 1, Homeobox protein NK-3 homolog B, NKX3-2, BAPX1, NKX3B
<b>Target/Specificity</b>	This NKX3-2 antibody is generated from rabbits immunized with a KLH conjugated synthetic peptide between 208-235 amino acids from the Central region of human NKX3-2.
<b>Dilution</b>	WB~~1:1000 E~~Use at an assay dependent concentration.
<b>Format</b>	Purified polyclonal antibody supplied in PBS with 0.09% (W/V) sodium azide. This antibody is purified through a protein A column, followed by peptide affinity purification.
<b>Storage</b>	Maintain refrigerated at 2-8°C for up to 2 weeks. For long term storage store at -20°C in small aliquots to prevent freeze-thaw cycles.
<b>Precautions</b>	NKX3-2 Antibody (Center) is for research use only and not for use in diagnostic or therapeutic procedures.

## Protein Information

---

<b>Name</b>	NKX3-2
<b>Synonyms</b>	BAPX1, NKX3B
<b>Function</b>	Transcriptional repressor that acts as a negative regulator of chondrocyte

maturation. PLays a role in distal stomach development; required for proper antral-pyloric morphogenesis and development of antral-type epithelium. In concert with GSC, defines the structural components of the middle ear; required for tympanic ring and gonium development and in the regulation of the width of the malleus (By similarity).

**Cellular Location**

Nucleus.

**Tissue Location**

Expressed at highest levels in cartilage, bone (osteosarcoma) and gut (small intestine and colon), whereas moderate expression is seen in trachea and brain. Expressed in visceral mesoderm and embryonic skeleton.

## Background

---

This gene encodes a member of the NK family of homeobox-containing proteins. The encoded protein may play a role in skeletal development.

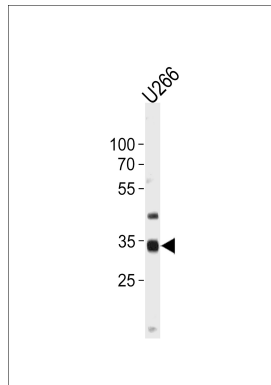
## References

---

Hellemans, J., et al. Am. J. Hum. Genet. 85(6):916-922(2009)  
Rodrigo, I., et al. Mol. Cell. Biol. 24(7):2757-2766(2004)  
Tribioli, C., et al. Gene 203(2):225-233(1997)  
Yoshiura, K.I., et al. Genomics 45(2):425-428(1997)  
Tribioli, C., et al. Mech. Dev. 65 (1-2), 145-162 (1997) :

## Images

---



NKX3-2 Antibody (Center) (Cat. #AP17702c) western blot analysis in U266 cell line lysates (35ug/lane). This demonstrates the NKX3-2 antibody detected the NKX3-2 protein (arrow).

Please note: All products are 'FOR RESEARCH USE ONLY. NOT FOR USE IN DIAGNOSTIC OR THERAPEUTIC PROCEDURES'.