

FIGNL1 Antibody (N-term)

Affinity Purified Rabbit Polyclonal Antibody (Pab)

Catalog # AP17687a

Product Information

Application	WB, E
Primary Accession	Q6PIW4
Other Accession	NP_001036227.1
Reactivity	Human
Host	Rabbit
Clonality	Polyclonal
Isotype	Rabbit IgG
Clone Names	RB37685
Calculated MW	74077
Antigen Region	12-40

Additional Information

Gene ID	63979
Other Names	Fidgetin-like protein 1, 364-, FIGNL1
Target/Specificity	This FIGNL1 antibody is generated from rabbits immunized with a KLH conjugated synthetic peptide between 12-40 amino acids from the N-terminal region of human FIGNL1.
Dilution	WB~~1:1000 E~~Use at an assay dependent concentration.
Format	Purified polyclonal antibody supplied in PBS with 0.09% (W/V) sodium azide. This antibody is purified through a protein A column, followed by peptide affinity purification.
Storage	Maintain refrigerated at 2-8°C for up to 2 weeks. For long term storage store at -20°C in small aliquots to prevent freeze-thaw cycles.
Precautions	FIGNL1 Antibody (N-term) is for research use only and not for use in diagnostic or therapeutic procedures.

Protein Information

Name	FIGNL1
Function	Involved in DNA double-strand break (DBS) repair via homologous recombination (HR). Recruited at DSB sites independently of BRCA2, RAD51 and RAD51 paralogs in a H2AX-dependent manner. May regulate osteoblast proliferation and differentiation (PubMed: 23754376). May play a role in the

control of male meiosis dynamic (By similarity).

Cellular Location

Nucleus. Cytoplasm {ECO:0000250|UniProtKB:Q8BPY9}. Cytoplasm, perinuclear region {ECO:0000250|UniProtKB:Q8BPY9}. Note=Together with RAD51 and a subset of H2A histone proteins, redistributed in discrete nuclear DNA damage- induced foci after ionizing radiation (IR) treatment (PubMed:23754376)

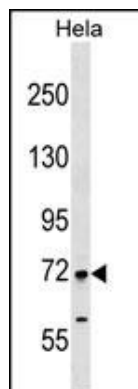
Background

FIGNL1 may regulate osteoblast proliferation and differentiation (By similarity).

References

de Krom, M., et al. Biol. Psychiatry 65(7):625-630(2009)
Matsuoka, S., et al. Science 316(5828):1160-1166(2007)

Images



FIGNL1 Antibody (N-term) (Cat. #AP17687a) western blot analysis in HeLa cell line lysates (35ug/lane). This demonstrates the FIGNL1 antibody detected the FIGNL1 protein (arrow).

Please note: All products are 'FOR RESEARCH USE ONLY. NOT FOR USE IN DIAGNOSTIC OR THERAPEUTIC PROCEDURES'.