

CNDP1 Antibody (Center)

Affinity Purified Rabbit Polyclonal Antibody (Pab)

Catalog # AP17674c

Product Information

Application	WB, E
Primary Accession	Q96KN2
Other Accession	Q66HG3 , Q8BUG2 , NP_116038.4
Reactivity	Human
Predicted	Mouse, Rat
Host	Rabbit
Clonality	Polyclonal
Isotype	Rabbit IgG
Clone Names	RB37545
Calculated MW	56692
Antigen Region	142-170

Additional Information

Gene ID	84735
Other Names	Beta-Ala-His dipeptidase, CNDP dipeptidase 1, Carnosine dipeptidase 1, Glutamate carboxypeptidase-like protein 2, Serum carnosinase, CNDP1, CN1, CPGL2
Target/Specificity	This CNDP1 antibody is generated from rabbits immunized with a KLH conjugated synthetic peptide between 142-170 amino acids from the Central region of human CNDP1.
Dilution	WB~~1:1000 E~~Use at an assay dependent concentration.
Format	Purified polyclonal antibody supplied in PBS with 0.09% (W/V) sodium azide. This antibody is purified through a protein A column, followed by peptide affinity purification.
Storage	Maintain refrigerated at 2-8°C for up to 2 weeks. For long term storage store at -20°C in small aliquots to prevent freeze-thaw cycles.
Precautions	CNDP1 Antibody (Center) is for research use only and not for use in diagnostic or therapeutic procedures.

Protein Information

Name	CNDP1 (HGNC:20675)
Synonyms	CN1, CPGL2

Function	Catalyzes the peptide bond hydrolysis in Xaa-His dipeptides, displaying the highest activity toward carnosine (beta-alanyl-L- histidine) and anserine (beta-alanyl-3-methyl-histidine).
Cellular Location	Secreted.
Tissue Location	Found in serum and adult nervous central system. Absent in serum from patients with homocarnosinosis

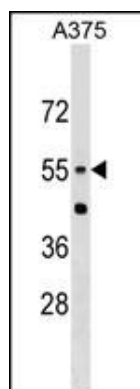
Background

This gene encodes a member of the M20 metalloprotease family. The encoded protein is specifically expressed in the brain, is a homodimeric dipeptidase which was identified as human carnosinase. This gene contains trinucleotide (CTG) repeat length polymorphism in the coding region.

References

Alkhalaf, A., et al. Diabetologia (2010) In press :
Riedl, E., et al. Diabetes 59(8):1984-1990(2010)
Rose, J.E., et al. Mol. Med. 16 (7-8), 247-253 (2010) :
Mooyaart, A.L., et al. Diabetes 59(6):1555-1559(2010)
Kim, S., et al. Clin J Am Soc Nephrol 5(6):1072-1078(2010)

Images



CNDP1 Antibody (Center) (Cat. #AP17674c) western blot analysis in A375 cell line lysates (35ug/lane). This demonstrates the CNBP1 antibody detected the CNBP1 protein (arrow).

Please note: All products are 'FOR RESEARCH USE ONLY. NOT FOR USE IN DIAGNOSTIC OR THERAPEUTIC PROCEDURES'.