

CCIN Antibody (Center)

Affinity Purified Rabbit Polyclonal Antibody (Pab)
Catalog # AP17618c

Product Information

Application	WB, E
Primary Accession	Q13939
Other Accession	Q5XI58 , Q8CDE2 , Q28068 , NP_005884.2
Reactivity	Human
Predicted	Bovine, Mouse, Rat
Host	Rabbit
Clonality	Polyclonal
Isotype	Rabbit IgG
Clone Names	RB37671
Antigen Region	373-400

Additional Information

Other Names	Calicin, CCIN
Target/Specificity	This CCIN antibody is generated from rabbits immunized with a KLH conjugated synthetic peptide between 373-400 amino acids from the Central region of human CCIN.
Dilution	WB~~1:1000 E~~Use at an assay dependent concentration.
Format	Purified polyclonal antibody supplied in PBS with 0.09% (W/V) sodium azide. This antibody is purified through a protein A column, followed by peptide affinity purification.
Storage	Maintain refrigerated at 2-8°C for up to 2 weeks. For long term storage store at -20°C in small aliquots to prevent freeze-thaw cycles.
Precautions	CCIN Antibody (Center) is for research use only and not for use in diagnostic or therapeutic procedures.

Protein Information

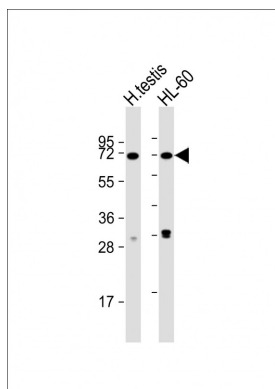
Background

The protein encoded by this gene is a basic protein of the sperm head cytoskeleton. This protein contains kelch repeats and a BTB/POZ domain and is necessary for normal morphology during sperm differentiation. This gene is intronless.

References

Lecuyer, C., et al. Biol. Reprod. 63(6):1801-1810(2000)
von Bulow, M., et al. Exp. Cell Res. 219(2):407-413(1995)

Images



All lanes : Anti-CCIN Antibody (Center) at 1:1000 dilution
Lane 1: human testis lysate Lane 2: HL-60 whole cell lysate
Lysates/proteins at 20 µg per lane. Secondary Goat Anti-Rabbit IgG, (H+L), Peroxidase conjugated at 1/10000 dilution. Predicted band size : 67 kDa
Blocking/Dilution buffer: 5% NFDM/TBST.

Please note: All products are 'FOR RESEARCH USE ONLY. NOT FOR USE IN DIAGNOSTIC OR THERAPEUTIC PROCEDURES'.