

TGM3 Antibody (C-term)

Affinity Purified Rabbit Polyclonal Antibody (Pab)
Catalog # AP17540b

Product Information

Application	WB, E
Primary Accession	Q08188
Other Accession	NP_003236.3
Reactivity	Human
Host	Rabbit
Clonality	Polyclonal
Isotype	Rabbit IgG
Clone Names	RB18959
Calculated MW	76632
Antigen Region	539-567

Additional Information

Gene ID	7053
Other Names	Protein-glutamine gamma-glutamyltransferase E, Transglutaminase E, TG(E), TGE, TGase E, Transglutaminase-3, TGase-3, Protein-glutamine gamma-glutamyltransferase E 50 kDa catalytic chain, Protein-glutamine gamma-glutamyltransferase E 27 kDa non-catalytic chain, TGM3
Target/Specificity	This TGM3 antibody is generated from rabbits immunized with a KLH conjugated synthetic peptide between 539-567 amino acids from the C-terminal region of human TGM3.
Dilution	WB~~1:1000 E~~Use at an assay dependent concentration.
Format	Purified polyclonal antibody supplied in PBS with 0.09% (W/V) sodium azide. This antibody is purified through a protein A column, followed by peptide affinity purification.
Storage	Maintain refrigerated at 2-8°C for up to 2 weeks. For long term storage store at -20°C in small aliquots to prevent freeze-thaw cycles.
Precautions	TGM3 Antibody (C-term) is for research use only and not for use in diagnostic or therapeutic procedures.

Protein Information

Name	TGM3
Function	Catalyzes the calcium-dependent formation of isopeptide cross-links

between glutamine and lysine residues in various proteins, as well as the conjugation of polyamines to proteins. Involved in the formation of the cornified envelope (CE), a specialized component consisting of covalent cross-links of proteins beneath the plasma membrane of terminally differentiated keratinocytes. Catalyzes small proline-rich proteins (SPRR1 and SPRR2) and LOR cross-linking to form small interchain oligomers, which are further cross-linked by TGM1 onto the growing CE scaffold (By similarity). In hair follicles, involved in cross-linking structural proteins to hardening the inner root sheath.

Cellular Location Cytoplasm.

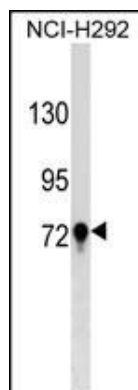
Background

Transglutaminases are enzymes that catalyze the crosslinking of proteins by epsilon-gamma glutamyl lysine isopeptide bonds. While the primary structure of transglutaminases is not conserved, they all have the same amino acid sequence at their active sites and their activity is calcium-dependent. The protein encoded by this gene consists of two polypeptide chains activated from a single precursor protein by proteolysis. The encoded protein is involved the later stages of cell envelope formation in the epidermis and hair follicle.

References

Yamane, A., et al. FEBS J. 277(17):3564-3574(2010)
Rose, J.E., et al. Mol. Med. 16 (7-8), 247-253 (2010) :
Negishi, A., et al. Cancer Sci. 100(9):1605-1611(2009)
Fujimoto, A., et al. J. Hum. Genet. 54(8):461-465(2009)
Uemura, N., et al. Int. J. Cancer 124(9):2106-2115(2009)

Images



TGM3 Antibody (C-term) (Cat. #AP17540b) western blot analysis in NCI-H292 cell line lysates (35ug/lane). This demonstrates the TGM3 antibody detected the TGM3 protein (arrow).

Please note: All products are 'FOR RESEARCH USE ONLY. NOT FOR USE IN DIAGNOSTIC OR THERAPEUTIC PROCEDURES'.