

MTMR14 Antibody (N-term)

Affinity Purified Rabbit Polyclonal Antibody (Pab)

Catalog # AP17472a

Product Information

Application	WB, E
Primary Accession	Q8NCE2
Other Accession	Q8VEL2 , NP_001070993.1 , NP_001070994.1
Reactivity	Human
Predicted	Mouse
Host	Rabbit
Clonality	Polyclonal
Isotype	Rabbit IgG
Clone Names	RB37496
Calculated MW	72203
Antigen Region	18-45

Additional Information

Gene ID	64419
Other Names	Myotubularin-related protein 14, 313-, HCV NS5A-transactivated protein 4 splice variant A-binding protein 1, NS5ATP4ABP1, hJumpy, MTMR14, C3orf29
Target/Specificity	This MTMR14 antibody is generated from rabbits immunized with a KLH conjugated synthetic peptide between 18-45 amino acids from the N-terminal region of human MTMR14.
Dilution	WB~~1:1000 E~~Use at an assay dependent concentration.
Format	Purified polyclonal antibody supplied in PBS with 0.09% (W/V) sodium azide. This antibody is purified through a protein A column, followed by peptide affinity purification.
Storage	Maintain refrigerated at 2-8°C for up to 2 weeks. For long term storage store at -20°C in small aliquots to prevent freeze-thaw cycles.
Precautions	MTMR14 Antibody (N-term) is for research use only and not for use in diagnostic or therapeutic procedures.

Protein Information

Name	MTMR14 (HGNC:26190)
Function	Lipid phosphatase that specifically dephosphorylates the D-3 position of phosphatidylinositol 3-phosphate and phosphatidylinositol 3,5-bisphosphate,

generating phosphatidylinositol and phosphatidylinositol 5-phosphate.

Cellular Location	Cytoplasm. Note=Found in reticular structures and plasma membrane ruffles Concentrated near the nucleus.
Tissue Location	Expressed in various tissues, including heart, skeletal muscle, placenta, liver, lung, kidney and pancreas

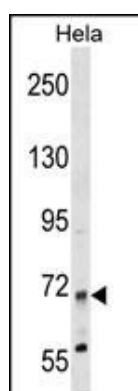
Background

This gene encodes a myotubularin-related protein. The encoded protein is a phosphoinositide phosphatase that specifically dephosphorylates phosphatidylinositol 3,5-biphosphate and phosphatidylinositol 3-phosphate. Mutations in this gene are correlated with autosomal dominant centronuclear myopathy. Alternate splicing results in multiple transcript variants. A pseudogene of this gene is found on chromosome 18.

References

Gibbs, E.M., et al. Autophagy 6(6):819-820(2010)
Rose, J.E., et al. Mol. Med. 16 (7-8), 247-253 (2010) :
Vergne, I., et al. EMBO J. 28(15):2244-2258(2009)
Tosch, V., et al. Hum. Mol. Genet. 15(21):3098-3106(2006)

Images



MTMR14 Antibody (N-term) (Cat. #AP17472a) western blot analysis in HeLa cell line lysates (35ug/lane). This demonstrates the MTMR14 antibody detected the MTMR14 protein (arrow).

Please note: All products are 'FOR RESEARCH USE ONLY. NOT FOR USE IN DIAGNOSTIC OR THERAPEUTIC PROCEDURES'.