

NET1 Antibody (Center)

Affinity Purified Rabbit Polyclonal Antibody (Pab)

Catalog # AP17382C

Product Information

| | |
|-------------------|--|
| Application | WB, E |
| Primary Accession | Q7Z628 |
| Other Accession | NP_001040625.1 , NP_005854.2 |
| Reactivity | Human, Rat, Mouse |
| Host | Rabbit |
| Clonality | Polyclonal |
| Isotype | Rabbit IgG |
| Clone Names | RB30330 |
| Calculated MW | 67740 |
| Antigen Region | 356-385 |

Additional Information

| | |
|--------------------|--|
| Gene ID | 10276 |
| Other Names | Neuroepithelial cell-transforming gene 1 protein, Proto-oncogene p65 Net1, Rho guanine nucleotide exchange factor 8, NET1, ARHGEF8 |
| Target/Specificity | This NET1 antibody is generated from rabbits immunized with a KLH conjugated synthetic peptide between 356-385 amino acids from the Central region of human NET1. |
| Dilution | WB~~1:1000-1:2000 E~~Use at an assay dependent concentration. |
| Format | Purified polyclonal antibody supplied in PBS with 0.09% (W/V) sodium azide. This antibody is purified through a protein A column, followed by peptide affinity purification. |
| Storage | Maintain refrigerated at 2-8°C for up to 2 weeks. For long term storage store at -20°C in small aliquots to prevent freeze-thaw cycles. |
| Precautions | NET1 Antibody (Center) is for research use only and not for use in diagnostic or therapeutic procedures. |

Protein Information

| | |
|----------|---|
| Name | NET1 |
| Synonyms | ARHGEF8 |
| Function | Acts as a guanine nucleotide exchange factor (GEF) for RhoA GTPase. May |

be involved in activation of the SAPK/JNK pathway Stimulates genotoxic stress-induced RHOB activity in breast cancer cells leading to their cell death.

Cellular Location Cytoplasm. Nucleus.

Tissue Location Widely expressed..

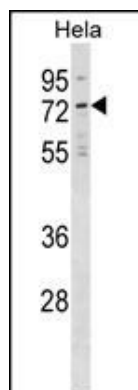
Background

NET1 acts as guanine nucleotide exchange factor (GEF) for RhoA GTPase. May be involved in activation of the SAPK/JNK pathway (By similarity).

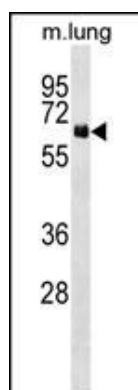
References

Lee, J., et al. J. Biol. Chem. 285(34):26618-26627(2010)
Carr, H.S., et al. J. Biol. Chem. 284(36):24269-24280(2009)
Gilcrease, M.Z., et al. Cancer Epidemiol. Biomarkers Prev. 18(1):80-86(2009)
Murray, D., et al. Br. J. Cancer 99(8):1322-1329(2008)
Guerra, L., et al. PLoS ONE 3 (5), E2254 (2008) :

Images



NET1 Antibody (Center) (Cat. #AP17382c) western blot analysis in HeLa cell line lysates (35ug/lane). This demonstrates the NET1 antibody detected the NET1 protein (arrow).



NET1 Antibody (Center) (Cat. #AP17382c) western blot analysis in mouse lung tissue lysates (35ug/lane). This demonstrates the NET1 antibody detected the NET1 protein (arrow).

Citations

- [Multi-target siRNA: Therapeutic Strategy for Hepatocellular Carcinoma.](#)