

GSG1 Antibody (C-term)

Affinity Purified Rabbit Polyclonal Antibody (Pab)

Catalog # AP17263b

Product Information

Application	WB, E
Primary Accession	Q2KHT4
Other Accession	NP_001074023.1 , NP_001074024.1
Reactivity	Human
Host	Rabbit
Clonality	Polyclonal
Isotype	Rabbit IgG
Clone Names	RB37260
Calculated MW	39248
Antigen Region	303-330

Additional Information

Gene ID	83445
Other Names	Germ cell-specific gene 1 protein, GSG1
Target/Specificity	This GSG1 antibody is generated from rabbits immunized with a KLH conjugated synthetic peptide between 303-330 amino acids from the C-terminal region of human GSG1.
Dilution	WB~~1:1000 E~~Use at an assay dependent concentration.
Format	Purified polyclonal antibody supplied in PBS with 0.09% (W/V) sodium azide. This antibody is purified through a protein A column, followed by peptide affinity purification.
Storage	Maintain refrigerated at 2-8°C for up to 2 weeks. For long term storage store at -20°C in small aliquots to prevent freeze-thaw cycles.
Precautions	GSG1 Antibody (C-term) is for research use only and not for use in diagnostic or therapeutic procedures.

Protein Information

Name	GSG1
Function	May cause the redistribution of PAPOLB from the cytosol to the endoplasmic reticulum.
Cellular Location	Endoplasmic reticulum membrane; Multi-pass membrane protein.

Note=Colocalizes with PAPOLB in the endoplasmic reticulum.

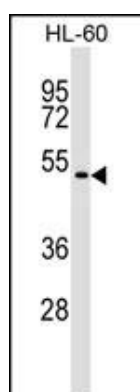
Background

GSG1 may cause the redistribution of PAPOLB from the cytosol to the endoplasmic reticulum (By similarity).

References

Rose, J.E., et al. Mol. Med. 16 (7-8), 247-253 (2010) :
Clark, H.F., et al. Genome Res. 13(10):2265-2270(2003)
Venter, J.C., et al. Science 291(5507):1304-1351(2001)
Matsui, M., et al. Mamm. Genome 8(11):873-874(1997)

Images



GSG1 Antibody (C-term) (Cat. #AP17263b) western blot analysis in HL-60 cell line lysates (35ug/lane). This demonstrates the GSG1 antibody detected the GSG1 protein (arrow).

Please note: All products are 'FOR RESEARCH USE ONLY. NOT FOR USE IN DIAGNOSTIC OR THERAPEUTIC PROCEDURES'.