

COL8A1 Antibody (N-term)

Affinity Purified Rabbit Polyclonal Antibody (Pab)

Catalog # AP17250a

Product Information

Application	WB, E
Primary Accession	P27658
Other Accession	NP_001841.2 , NP_065084.2
Reactivity	Human, Rat, Mouse
Host	Rabbit
Clonality	Polyclonal
Isotype	Rabbit IgG
Clone Names	RB37092
Calculated MW	73364
Antigen Region	62-89

Additional Information

Gene ID	1295
Other Names	Collagen alpha-1(VIII) chain, Endothelial collagen, Vastatin, COL8A1, C3orf7
Target/Specificity	This COL8A1 antibody is generated from rabbits immunized with a KLH conjugated synthetic peptide between 62-89 amino acids from the N-terminal region of human COL8A1.
Dilution	WB~~1:1000 E~~Use at an assay dependent concentration.
Format	Purified polyclonal antibody supplied in PBS with 0.05% (V/V) Proclin 300. This antibody is purified through a protein A column, followed by peptide affinity purification.
Storage	Maintain refrigerated at 2-8°C for up to 2 weeks. For long term storage store at -20°C in small aliquots to prevent freeze-thaw cycles.
Precautions	COL8A1 Antibody (N-term) is for research use only and not for use in diagnostic or therapeutic procedures.

Protein Information

Name	COL8A1
Synonyms	C3orf7
Function	Macromolecular component of the subendothelium. Major component of the Descemet's membrane (basement membrane) of corneal endothelial

cells. Also a component of the endothelia of blood vessels. Necessary for migration and proliferation of vascular smooth muscle cells and thus, has a potential role in the maintenance of vessel wall integrity and structure, in particular in atherogenesis.

Cellular Location

Secreted, extracellular space, extracellular matrix, basement membrane

Tissue Location

Expressed primarily in the subendothelium of large blood vessels. Also expressed in arterioles and venules in muscle, heart, kidney, spleen, umbilical cord, liver and lung and is also found in connective tissue layers around hair follicles, around nerve bundles in muscle, in the dura of the optic nerve, in cornea and sclera, and in the perichondrium of cartilaginous tissues. In the kidney, expressed in mesangial cells, glomerular endothelial cells, and tubular epithelial cells. Also expressed in mast cells, and in astrocytes during the repair process. Expressed in Descemet's membrane. Specifically expressed in peritoneal fibroblasts and mesothelial cells

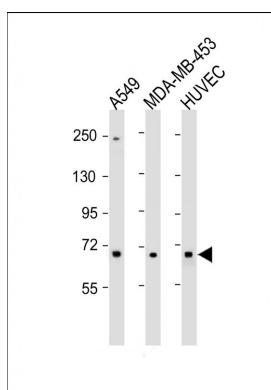
Background

This gene encodes one of the two alpha chains of type VIII collagen. The gene product is a short chain collagen and a major component of the basement membrane of the corneal endothelium. The type VIII collagen fibril can be either a homo- or a heterotrimer. Alternatively spliced transcript variants encoding the same isoform have been observed.

References

Bailey, S.D., et al. Diabetes Care 33(10):2250-2253(2010)
Rose, J.E., et al. Mol. Med. 16 (7-8), 247-253 (2010) :
Neale, B.M., et al. Proc. Natl. Acad. Sci. U.S.A. 107(16):7395-7400(2010)
Talmud, P.J., et al. Am. J. Hum. Genet. 85(5):628-642(2009)
Marroni, F., et al. Circ Cardiovasc Genet 2(4):322-328(2009)

Images



All lanes : Anti-COL8A1 Antibody (N-term) at 1:1000 dilution Lane 1: A549 whole cell lysate Lane 2: MDA-MB-453 whole cell lysate Lane 3: HUVEC whole cell lysate Lysates/proteins at 20 µg per lane. Secondary Goat Anti-Rabbit IgG, (H+L), Peroxidase conjugated at 1/10000 dilution. Predicted band size : 73 kDa Blocking/Dilution buffer: 5% NFDM/TBST.

Please note: All products are 'FOR RESEARCH USE ONLY. NOT FOR USE IN DIAGNOSTIC OR THERAPEUTIC PROCEDURES'.