

Bmp1 Antibody (C-term)

Purified Rabbit Polyclonal Antibody (Pab)

Catalog # AP1712a

Product Information

Application	IHC-P, WB, E
Primary Accession	P13497
Other Accession	P98063
Reactivity	Human, Mouse
Host	Rabbit
Clonality	Polyclonal
Isotype	Rabbit IgG
Clone Names	RB1853-1854
Antigen Region	957-986

Additional Information

Other Names	Bone morphogenetic protein 1, BMP-1, Mammalian tolloid protein, mTld, Procollagen C-proteinase, PCP, BMP1, PCOLC
Target/Specificity	This Bmp1 antibody is generated from rabbits immunized with a KLH conjugated synthetic peptide between 957-986 amino acids from the C-terminal region of human Bmp1.
Dilution	IHC-P~~1:100~500 WB~~1:1000 E~~Use at an assay dependent concentration.
Format	Purified polyclonal antibody supplied in PBS with 0.09% (W/V) sodium azide. This antibody is prepared by Saturated Ammonium Sulfate (SAS) precipitation followed by dialysis against PBS.
Storage	Maintain refrigerated at 2-8°C for up to 2 weeks. For long term storage store at -20°C in small aliquots to prevent freeze-thaw cycles.
Precautions	Bmp1 Antibody (C-term) is for research use only and not for use in diagnostic or therapeutic procedures.

Protein Information

Background

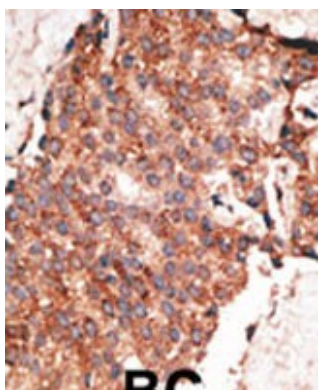
The BMP1 locus encodes a protein that is capable of inducing formation of cartilage in vivo. Although other bone morphogenetic proteins are members of the TGF-beta superfamily, BMP1 encodes a protein that is not closely related to other known growth factors. BMP1 protein and procollagen C proteinase (PCP), a secreted metalloprotease requiring calcium and needed for cartilage and bone formation, are identical. PCP or BMP1 protein cleaves the C-terminal propeptides of procollagen I, II, and III and its activity is increased by the

procollagen C-endopeptidase enhancer protein. The BMP1 gene is expressed as alternatively spliced variants that share an N-terminal protease domain but differ in their C-terminal region.

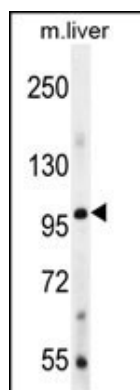
References

Leighton, M., et al., J. Biol. Chem. 278(20):18478-18484 (2003).
Hartigan, N., et al., J. Biol. Chem. 278(20):18045-18049 (2003).
Garrigue-Antar, L., et al., J. Biol. Chem. 277(45):43327-43334 (2002).
Rattenholl, A., et al., J. Biol. Chem. 277(29):26372-26378 (2002).
Janitz, M., et al., J. Mol. Med. 76(2):141-146 (1998).

Images



Formalin-fixed and paraffin-embedded human cancer tissue reacted with the primary antibody, which was peroxidase-conjugated to the secondary antibody, followed by AEC staining. This data demonstrates the use of this antibody for immunohistochemistry; clinical relevance has not been evaluated. BC = breast carcinoma; HC = hepatocarcinoma.



Bmp1 Antibody (R972) (Cat. #AP1712a) western blot analysis in mouse liver tissue lysates (35ug/lane). This demonstrates the Bmp1 antibody detected the Bmp1 protein (arrow).

Citations

- [Secretomes reveal several novel proteins as well as TGF-β1 as the top upstream regulator of metastatic process in breast cancer.](#)

Please note: All products are 'FOR RESEARCH USE ONLY. NOT FOR USE IN DIAGNOSTIC OR THERAPEUTIC PROCEDURES'.