

GFOD2 Antibody (N-term)

Affinity Purified Rabbit Polyclonal Antibody (Pab)

Catalog # AP17123a

Product Information

Application	WB, E
Primary Accession	Q3B7J2
Other Accession	Q9CYH5 , NP_110446.3
Reactivity	Human
Predicted	Mouse
Host	Rabbit
Clonality	Polyclonal
Isotype	Rabbit IgG
Clone Names	RB37256
Calculated MW	42255
Antigen Region	277-305

Additional Information

Gene ID	81577
Other Names	Glucose-fructose oxidoreductase domain-containing protein 2, 1---, GFOD2
Target/Specificity	This GFOD2 antibody is generated from rabbits immunized with a KLH conjugated synthetic peptide between 277-305 amino acids from the N-terminal region of human GFOD2.
Dilution	WB~~1:1000 E~~Use at an assay dependent concentration.
Format	Purified polyclonal antibody supplied in PBS with 0.09% (W/V) sodium azide. This antibody is purified through a protein A column, followed by peptide affinity purification.
Storage	Maintain refrigerated at 2-8°C for up to 2 weeks. For long term storage store at -20°C in small aliquots to prevent freeze-thaw cycles.
Precautions	GFOD2 Antibody (N-term) is for research use only and not for use in diagnostic or therapeutic procedures.

Protein Information

Name	GFOD2
Function	Promotes matrix assembly.
Cellular Location	Secreted, extracellular space, extracellular matrix

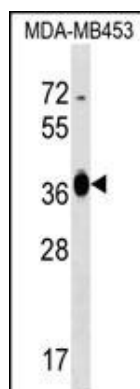
Background

GFOD2 promotes matrix assembly (By similarity).

References

Clark, H.F., et al. Genome Res. 13(10):2265-2270(2003)

Images



GFOD2 Antibody (N-term) (Cat. #AP17123a) western blot analysis in MDA-MB453 cell line lysates (35ug/lane). This demonstrates the GFOD2 antibody detected the GFOD2 protein (arrow).

Please note: All products are 'FOR RESEARCH USE ONLY. NOT FOR USE IN DIAGNOSTIC OR THERAPEUTIC PROCEDURES'.