

# RAPGEF5 Antibody (C-term)

Affinity Purified Rabbit Polyclonal Antibody (Pab)

Catalog # AP17073b

## Product Information

---

Application	WB, E
Primary Accession	<a href="#">Q92565</a>
Other Accession	<a href="#">NP_036426.3</a>
Reactivity	Human
Host	Rabbit
Clonality	Polyclonal
Isotype	Rabbit IgG
Clone Names	RB36938
Calculated MW	67733
Antigen Region	529-555

## Additional Information

---

Gene ID	9771
Other Names	Rap guanine nucleotide exchange factor 5, Guanine nucleotide exchange factor for Rap1, M-Ras-regulated Rap GEF, MR-GEF, Related to Epac, Repac, RAPGEF5, GFR, KIAA0277, MRGEF
Target/Specificity	This RAPGEF5 antibody is generated from rabbits immunized with a KLH conjugated synthetic peptide between 529-555 amino acids from the C-terminal region of human RAPGEF5.
Dilution	WB~~1:1000 E~~Use at an assay dependent concentration.
Format	Purified polyclonal antibody supplied in PBS with 0.09% (W/V) sodium azide. This antibody is purified through a protein A column, followed by peptide affinity purification.
Storage	Maintain refrigerated at 2-8°C for up to 2 weeks. For long term storage store at -20°C in small aliquots to prevent freeze-thaw cycles.
Precautions	RAPGEF5 Antibody (C-term) is for research use only and not for use in diagnostic or therapeutic procedures.

## Protein Information

---

Name	RAPGEF5
Synonyms	GFR, KIAA0277, MRGEF

<b>Function</b>	Guanine nucleotide exchange factor (GEF) for RAP1A, RAP2A and MRAS/M-Ras-GTP. Its association with MRAS inhibits Rap1 activation.
<b>Cellular Location</b>	Nucleus.
<b>Tissue Location</b>	Widely expressed with highest levels in brain.

## Background

---

Members of the RAS (see HRAS; MIM 190020) subfamily of GTPases function in signal transduction as GTP/GDP-regulated switches that cycle between inactive GDP- and active GTP-bound states. Guanine nucleotide exchange factors (GEFs), such as RAPGEF5, serve as RAS activators by promoting acquisition of GTP to maintain the active GTP-bound state and are the key link between cell surface receptors and RAS activation (Rebhun et al., 2000 [PubMed 10934204]).

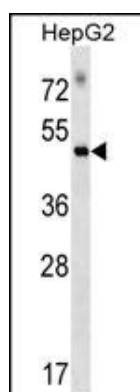
## References

---

Rose, J.E., et al. Mol. Med. 16 (7-8), 247-253 (2010) :  
 Okada, Y., et al. Hum. Mol. Genet. 19(11):2303-2312(2010)  
 Hwang, S.J., et al. BMC Med. Genet. 8 SUPPL 1, S10 (2007) :  
 Rebhun, J.F., et al. J. Biol. Chem. 275(45):34901-34908(2000)  
 de Rooij, J., et al. J. Biol. Chem. 275(27):20829-20836(2000)

## Images

---



RAPGEF5 Antibody (C-term) (Cat. #AP17073b) western blot analysis in HepG2 cell line lysates (35ug/lane). This demonstrates the RAPGEF5 antibody detected the RAPGEF5 protein (arrow).

Please note: All products are 'FOR RESEARCH USE ONLY. NOT FOR USE IN DIAGNOSTIC OR THERAPEUTIC PROCEDURES'.