

NEGR1 Antibody (Center)

Affinity Purified Rabbit Polyclonal Antibody (Pab)

Catalog # AP16955c

Product Information

Application	WB, E
Primary Accession	Q7Z3B1
Other Accession	NP_776169.2
Reactivity	Human
Host	Rabbit
Clonality	Polyclonal
Isotype	Rabbit IgG
Clone Names	RB36589
Calculated MW	38719
Antigen Region	189-218

Additional Information

Gene ID	257194
Other Names	Neuronal growth regulator 1, IGLON family member 4, NEGR1, IGLON4
Target/Specificity	This NEGR1 antibody is generated from rabbits immunized with a KLH conjugated synthetic peptide between 189-218 amino acids from the Central region of human NEGR1.
Dilution	WB~~1:1000 E~~Use at an assay dependent concentration.
Format	Purified polyclonal antibody supplied in PBS with 0.09% (W/V) sodium azide. This antibody is purified through a protein A column, followed by peptide affinity purification.
Storage	Maintain refrigerated at 2-8°C for up to 2 weeks. For long term storage store at -20°C in small aliquots to prevent freeze-thaw cycles.
Precautions	NEGR1 Antibody (Center) is for research use only and not for use in diagnostic or therapeutic procedures.

Protein Information

Name	NEGR1
Synonyms	IGLON4
Function	May be involved in cell-adhesion. May function as a trans- neural growth-promoting factor in regenerative axon sprouting in the mammalian

brain (By similarity).

Cellular Location

Cell membrane; Lipid-anchor, GPI- anchor

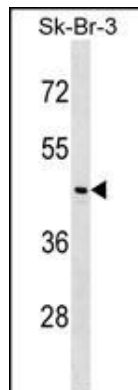
Background

NEGR1 may be involved in cell-adhesion. May function as a trans-neural growth-promoting factor in regenerative axon sprouting in the mammalian brain (By similarity).

References

Bailey, S.D., et al. Diabetes Care 33(10):2250-2253(2010)
Fontaine-Bisson, B., et al. Diabetologia 53(10):2155-2162(2010)
Holzapfel, C., et al. Int J Obes (Lond) 34(10):1538-1545(2010)
Melen, E., et al. J. Allergy Clin. Immunol. 126(3):631-637(2010)
Elks, C.E., et al. PLoS Med. 7 (5), E1000284 (2010) :

Images



NEGR1 Antibody (Center) (Cat. #AP16955c) western blot analysis in SK-BR-3 cell line lysates (35ug/lane). This demonstrates the NEGR1 antibody detected the NEGR1 protein (arrow).

Please note: All products are 'FOR RESEARCH USE ONLY. NOT FOR USE IN DIAGNOSTIC OR THERAPEUTIC PROCEDURES'.