

CSPG5 Antibody (C-term)

Affinity Purified Rabbit Polyclonal Antibody (Pab)

Catalog # AP16908b

Product Information

Application	WB, E
Primary Accession	O95196
Other Accession	NP_006565.2
Reactivity	Human
Host	Rabbit
Clonality	Polyclonal
Isotype	Rabbit IgG
Clone Names	RB35886
Calculated MW	60016
Antigen Region	530-559

Additional Information

Gene ID	10675
Other Names	Chondroitin sulfate proteoglycan 5, Acidic leucine-rich EGF-like domain-containing brain protein, Neuroglycan C, CSPG5, CALEB, NGC
Target/Specificity	This CSPG5 antibody is generated from rabbits immunized with a KLH conjugated synthetic peptide between 530-559 amino acids from the C-terminal region of human CSPG5.
Dilution	WB~~1:1000 E~~Use at an assay dependent concentration.
Format	Purified polyclonal antibody supplied in PBS with 0.09% (W/V) sodium azide. This antibody is purified through a protein A column, followed by peptide affinity purification.
Storage	Maintain refrigerated at 2-8°C for up to 2 weeks. For long term storage store at -20°C in small aliquots to prevent freeze-thaw cycles.
Precautions	CSPG5 Antibody (C-term) is for research use only and not for use in diagnostic or therapeutic procedures.

Protein Information

Name	CSPG5
Synonyms	CALEB, NGC
Function	May function as a growth and differentiation factor involved in

neuritogenesis. May induce ERBB3 activation.

Cellular Location

Cell membrane {ECO:0000250|UniProtKB:Q9ERQ6}; Single-pass type I membrane protein {ECO:0000250|UniProtKB:Q9ERQ6} Synaptic cell membrane {ECO:0000250|UniProtKB:Q71M36}; Single-pass type I membrane protein {ECO:0000250|UniProtKB:Q71M36}. Endoplasmic reticulum membrane {ECO:0000250|UniProtKB:Q71M36}; Single-pass type I membrane protein {ECO:0000250|UniProtKB:Q71M36}. Golgi apparatus membrane {ECO:0000250|UniProtKB:Q71M36}; Single-pass type I membrane protein {ECO:0000250|UniProtKB:Q71M36}. Cell surface {ECO:0000250|UniProtKB:Q71M36}. Secreted. Note=In neurons, localizes to synaptic junctions. Also detected in the endoplasmic reticulum and the Golgi Partially enriched in lipid rafts. {ECO:0000250|UniProtKB:Q71M36, ECO:0000250|UniProtKB:Q9ERQ6}

Tissue Location

Detected in cerebrospinal fluid (at protein level) (PubMed:25326458). Detected in urine (at protein level) (PubMed:37453717). Expressed in brain (at protein level) (PubMed:9950058).

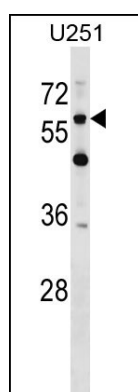
Background

CSPG5 may function as a growth and differentiation factor involved in neuritogenesis. May induce ERBB3 activation.

References

So, H.C., et al. Am. J. Med. Genet. B Neuropsychiatr. Genet. 153B (1), 103-113 (2010) :
Ichiهارa-Tanaka, K., et al. J. Biol. Chem. 281(41):30857-30864(2006)
Aono, S., et al. J. Neurosci. Res. 83(1):110-118(2006)
Kinugasa, Y., et al. Biochem. Biophys. Res. Commun. 321(4):1045-1049(2004)
Hassel, B., et al. J. Biol. Chem. 278(41):40136-40143(2003)

Images



CSPG5 Antibody (C-term) (Cat. #AP16908b) western blot analysis in U251 cell line lysates (35ug/lane). This demonstrates the CSPG5 antibody detected the CSPG5 protein (arrow).

Please note: All products are 'FOR RESEARCH USE ONLY. NOT FOR USE IN DIAGNOSTIC OR THERAPEUTIC PROCEDURES'.