

PSG2 Antibody (C-term)

Affinity Purified Rabbit Polyclonal Antibody (Pab)

Catalog # AP16905b

Product Information

Application	WB, E
Primary Accession	P11465
Other Accession	NP_112536.2
Reactivity	Human
Host	Rabbit
Clonality	Polyclonal
Isotype	Rabbit IgG
Clone Names	RB35871
Calculated MW	37216
Antigen Region	225-254

Additional Information

Gene ID	5670
Other Names	Pregnancy-specific beta-1-glycoprotein 2, PS-beta-G-2, PSBG-2, Pregnancy-specific glycoprotein 2, Pregnancy-specific beta-1 glycoprotein E, PS-beta-E, PSG2, PSBG2
Target/Specificity	This PSG2 antibody is generated from rabbits immunized with a KLH conjugated synthetic peptide between 225-254 amino acids from the C-terminal region of human PSG2.
Dilution	WB~~1:1000 E~~Use at an assay dependent concentration.
Format	Purified polyclonal antibody supplied in PBS with 0.09% (W/V) sodium azide. This antibody is purified through a protein A column, followed by peptide affinity purification.
Storage	Maintain refrigerated at 2-8°C for up to 2 weeks. For long term storage store at -20°C in small aliquots to prevent freeze-thaw cycles.
Precautions	PSG2 Antibody (C-term) is for research use only and not for use in diagnostic or therapeutic procedures.

Protein Information

Name	PSG2
Synonyms	PSBG2

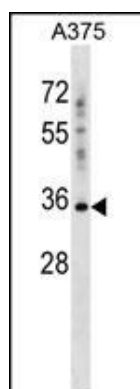
Background

The human pregnancy-specific glycoproteins (PSGs) are a family of proteins that are synthesized in large amounts by placental trophoblasts and released into the maternal circulation during pregnancy. Molecular cloning and analysis of several PSG genes has indicated that the PSGs form a subgroup of the carcinoembryonic antigen (CEA) gene family, which belongs to the immunoglobulin superfamily of genes. Members of the CEA family consist of a single N domain, with structural similarity to the immunoglobulin variable domains, followed by a variable number of immunoglobulin constant-like A and/or B domains. Most PSGs have an arg-gly-asp (RGD) motif, which has been shown to function as an adhesion recognition signal for several integrins, in the N-terminal domain (summary by Teglund et al., 1994 [PubMed 7851896]). For additional general information about the PSG gene family, see PSG1 (MIM 176390).

References

Tsavaris, N., et al. J Chemother 21(6):673-680(2009)
Mennuni, C., et al. Int. J. Cancer 117(3):444-455(2005)
Colland, F., et al. Genome Res. 14(7):1324-1332(2004)
Grimwood, J., et al. Nature 428(6982):529-535(2004)
Teglund, S., et al. Genomics 23(3):669-684(1994)

Images



PSG2 Antibody (C-term) (Cat. #AP16905b) western blot analysis in A375 cell line lysates (35ug/lane). This demonstrates the PSG2 antibody detected the PSG2 protein (arrow).

Please note: All products are 'FOR RESEARCH USE ONLY. NOT FOR USE IN DIAGNOSTIC OR THERAPEUTIC PROCEDURES'.