

# SEPT11 Antibody (Center)

Affinity Purified Rabbit Polyclonal Antibody (Pab)  
Catalog # AP16837c

## Product Information

---

<b>Application</b>	WB, E
<b>Primary Accession</b>	<a href="#">Q9NVA2</a>
<b>Other Accession</b>	<a href="#">B3GNI6</a> , <a href="#">Q8C1B7</a> , <a href="#">Q4R555</a> , <a href="#">A2VE99</a> , <a href="#">NP_060713.1</a>
<b>Reactivity</b>	Human
<b>Predicted</b>	Bovine, Monkey, Mouse, Rat
<b>Host</b>	Rabbit
<b>Clonality</b>	Polyclonal
<b>Isotype</b>	Rabbit IgG
<b>Clone Names</b>	RB36576
<b>Calculated MW</b>	49398
<b>Antigen Region</b>	353-382

## Additional Information

---

<b>Gene ID</b>	55752
<b>Other Names</b>	Septin-11, SEPT11
<b>Target/Specificity</b>	This SEPT11 antibody is generated from rabbits immunized with a KLH conjugated synthetic peptide between 353-382 amino acids from the Central region of human SEPT11.
<b>Dilution</b>	WB~~1:1000 E~~Use at an assay dependent concentration.
<b>Format</b>	Purified polyclonal antibody supplied in PBS with 0.09% (W/V) sodium azide. This antibody is purified through a protein A column, followed by peptide affinity purification.
<b>Storage</b>	Maintain refrigerated at 2-8°C for up to 2 weeks. For long term storage store at -20°C in small aliquots to prevent freeze-thaw cycles.
<b>Precautions</b>	SEPT11 Antibody (Center) is for research use only and not for use in diagnostic or therapeutic procedures.

## Protein Information

---

<b>Name</b>	SEPTIN11 ( <a href="#">HGNC:25589</a> )
<b>Synonyms</b>	SEPT11
<b>Function</b>	Filament-forming cytoskeletal GTPase. May play a role in cytokinesis

(Potential). May play a role in the cytoarchitecture of neurons, including dendritic arborization and dendritic spines, and in GABAergic synaptic connectivity (By similarity). During *Listeria monocytogenes* infection, not required for the bacterial entry process, but restricts its efficacy.

#### Cellular Location

Cytoplasm, cytoskeleton. Synapse. Cell projection, dendritic spine. Cell projection, axon Note=Partly colocalizes with stress fibers and microtubules. During bacterial infection, displays a collar shape structure next to actin at the pole of invading bacteria

#### Tissue Location

Widely expressed, except in leukocytes.

## Background

---

SEPT11 belongs to the conserved septin family of filament-forming cytoskeletal GTPases that are involved in a variety of cellular functions including cytokinesis and vesicle trafficking (Hanai et al., 2004 [PubMed 15196925]; Nagata et al., 2004 [PubMed 15485874]).

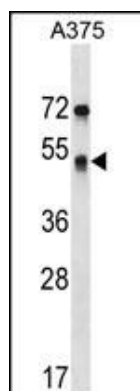
## References

---

- Rose, J.E., et al. Mol. Med. 16 (7-8), 247-253 (2010) :  
Huang, G.L., et al. World J. Gastroenterol. 16(16):2046-2054(2010)  
Mostowy, S., et al. J. Biol. Chem. 284(17):11613-11621(2009)  
Ding, X., et al. Mol. Cells 25(3):385-389(2008)  
Xin, X., et al. J. Histochem. Cytochem. 55(11):1089-1094(2007)

## Images

---



SEPT11 Antibody (Center) (Cat. #AP16837c) western blot analysis in A375 cell line lysates (35ug/lane). This demonstrates the SEPT11 antibody detected the SEPT11 protein (arrow).

## Citations

---

- [A Septin Cytoskeleton-Targeting Small Molecule, Forchlorfenuron, Inhibits Epithelial Migration via Septin-Independent Perturbation of Cellular Signaling](#)

Please note: All products are 'FOR RESEARCH USE ONLY. NOT FOR USE IN DIAGNOSTIC OR THERAPEUTIC PROCEDURES'.