

RFX1 Antibody (C-term)

Affinity Purified Rabbit Polyclonal Antibody (Pab)

Catalog # AP16766B

Product Information

Application	IF, WB, E
Primary Accession	P22670
Other Accession	P48377 , NP_002909.4
Reactivity	Human, Mouse
Predicted	Mouse
Host	Rabbit
Clonality	Polyclonal
Isotype	Rabbit IgG
Clone Names	RB30347
Calculated MW	104758
Antigen Region	896-925

Additional Information

Gene ID	5989
Other Names	MHC class II regulatory factor RFX1, Enhancer factor C, EF-C, Regulatory factor X 1, RFX, Transcription factor RFX1, RFX1
Target/Specificity	This RFX1 antibody is generated from rabbits immunized with a KLH conjugated synthetic peptide between 896-925 amino acids from the C-terminal region of human RFX1.
Dilution	IF~~1:10~50 WB~~1:2000 E~~Use at an assay dependent concentration.
Format	Purified polyclonal antibody supplied in PBS with 0.09% (W/V) sodium azide. This antibody is purified through a protein A column, followed by peptide affinity purification.
Storage	Maintain refrigerated at 2-8°C for up to 2 weeks. For long term storage store at -20°C in small aliquots to prevent freeze-thaw cycles.
Precautions	RFX1 Antibody (C-term) is for research use only and not for use in diagnostic or therapeutic procedures.

Protein Information

Name	RFX1
Function	Regulatory factor essential for MHC class II genes expression. Binds to the X boxes of MHC class II genes. Also binds to an inverted repeat (ENH1) required

for hepatitis B virus genes expression and to the most upstream element (alpha) of the RPL30 promoter.

Cellular Location

Nucleus.

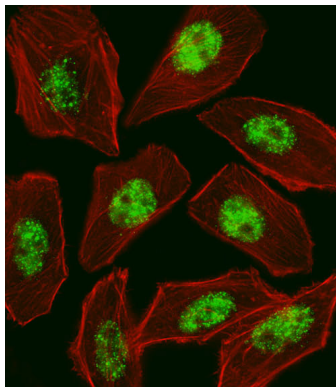
Background

This gene is a member of the regulatory factor X gene family, which encodes transcription factors that contain a highly-conserved winged helix DNA binding domain. The protein encoded by this gene is structurally related to regulatory factors X2, X3, X4, and X5. It is a transcriptional activator that can bind DNA as a monomer or as a heterodimer with RFX family members X2, X3, and X5, but not with X4. This protein binds to the X-boxes of MHC class II genes and is essential for their expression. Also, it can bind to an inverted repeat that is required for expression of hepatitis B virus genes.

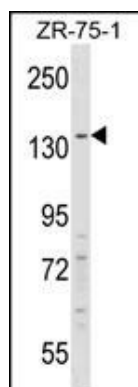
References

Zhao, M., et al. J. Autoimmun. 35(1):58-69(2010)
Purvis, T.L., et al. Gene 460 (1-2), 20-29 (2010) :
Hsu, Y.C., et al. J. Biol. Chem. 285(18):13885-13895(2010)
Seguin-Estevez, Q., et al. J. Immunol. 183(4):2545-2553(2009)
Zhang, Y., et al. Mol. Biol. (Mosk.) 43(1):77-84(2009)

Images



Fluorescent image of U251 cell stained with RFX1 Antibody (C-term)(Cat#AP16766b).U251 cells were fixed with 4% PFA (20 min), permeabilized with Triton X-100 (0.1%, 10 min), then incubated with RFX1 primary antibody (1:25, 1 h at 37°C). For secondary antibody, Alexa Fluor® 488 conjugated donkey anti-rabbit antibody (green) was used (1:400, 50 min at 37°C).Cytoplasmic actin was counterstained with Alexa Fluor® 555 (red) conjugated Phalloidin (7units/ml, 1 h at 37°C).RFX1 immunoreactivity is localized to Nucleus significantly.



RFX1 Antibody (C-term) (Cat. #AP16766b) western blot analysis in ZR-75-1 cell line lysates (35ug/lane).This demonstrates the RFX1 antibody detected the RFX1 protein (arrow).

Please note: All products are 'FOR RESEARCH USE ONLY. NOT FOR USE IN DIAGNOSTIC OR THERAPEUTIC PROCEDURES'.