

# MPP5 Antibody (C-term)

Affinity Purified Rabbit Polyclonal Antibody (Pab)

Catalog # AP16584b

## Product Information

---

Application	WB, E
Primary Accession	<a href="#">Q8N3R9</a>
Other Accession	<a href="#">NP_071919.2</a>
Reactivity	Human, Mouse
Host	Rabbit
Clonality	Polyclonal
Isotype	Rabbit IgG
Clone Names	RB35293
Calculated MW	77294
Antigen Region	497-526

## Additional Information

---

Gene ID	64398
Other Names	MAGUK p55 subfamily member 5, MPP5
Target/Specificity	This MPP5 antibody is generated from rabbits immunized with a KLH conjugated synthetic peptide between 497-526 amino acids from the C-terminal region of human MPP5.
Dilution	WB~~1:1000 E~~Use at an assay dependent concentration.
Format	Purified polyclonal antibody supplied in PBS with 0.09% (W/V) sodium azide. This antibody is purified through a protein A column, followed by peptide affinity purification.
Storage	Maintain refrigerated at 2-8°C for up to 2 weeks. For long term storage store at -20°C in small aliquots to prevent freeze-thaw cycles.
Precautions	MPP5 Antibody (C-term) is for research use only and not for use in diagnostic or therapeutic procedures.

## Protein Information

---

Name	PALS1 {ECO:0000303   PubMed:21479189, ECO:0000312   HGNC:HGNC:18669}
Function	Plays a role in tight junction biogenesis and in the establishment of cell polarity in epithelial cells (PubMed: <a href="#">16678097</a> , PubMed: <a href="#">25385611</a> ). Also involved in adherens junction biogenesis by ensuring correct localization of the exocyst complex protein EXOC4/SEC8 which allows trafficking of adherens

junction structural component CDH1 to the cell surface (By similarity). Plays a role through its interaction with CDH5 in vascular lumen formation and endothelial membrane polarity (PubMed:27466317). Required during embryonic and postnatal retinal development (By similarity). Required for the maintenance of cerebellar progenitor cells in an undifferentiated proliferative state, preventing premature differentiation, and is required for cerebellar histogenesis, fissure formation, cerebellar layer organization and cortical development (By similarity). Plays a role in neuronal progenitor cell survival, potentially via promotion of mTOR signaling (By similarity). Plays a role in the radial and longitudinal extension of the myelin sheath in Schwann cells (By similarity). May modulate SC6A1/GAT1-mediated GABA uptake by stabilizing the transporter (By similarity). Plays a role in the T-cell receptor-mediated activation of NF-kappa-B (PubMed:21479189). Required for localization of EZR to the apical membrane of parietal cells and may play a role in the dynamic remodeling of the apical cytoskeleton (By similarity). Required for the normal polarized localization of the vesicular marker STX4 (By similarity). Required for the correct trafficking of the myelin proteins PMP22 and MAG (By similarity). Involved in promoting phosphorylation and cytoplasmic retention of transcriptional coactivators YAP1 and WWTR1/TAZ which leads to suppression of TGFB1-dependent transcription of target genes such as CCN2/CTGF, SERPINE1/PAI1, SNAI1/SNAIL1 and SMAD7 (By similarity).

## Cellular Location

Golgi apparatus. Cell membrane; Peripheral membrane protein. Endomembrane system; Peripheral membrane protein. Cell junction, tight junction. Cell junction, adherens junction. Cell projection, axon {ECO:0000250|UniProtKB:Q9JLB2}. Perikaryon {ECO:0000250|UniProtKB:Q9JLB2}. Apical cell membrane. Note=Localized to the tight junctions of epithelial cells (By similarity). Localized to the Golgi apparatus in T lymphocytes (PubMed:21479189). Localized to a subset of intracellular vesicles (By similarity). Localized to the Purkinje cell body and axon (By similarity). Localized to intercellular junctions in vascular endothelial cells (PubMed:27466317). Localized to Schmidt-Lanterman incisures, the adaxonal domain, and the inner part of paranodal loops in myelinating Schwann cells of the sciatic nerve (By similarity) Localized to apical membrane domains of the outer limiting membrane (OLM) junctions in the retina (By similarity). Colocalizes with CRB1 at the OLM, apical to the adherens junction (PubMed:15914641). Colocalizes with MPP1 in the retina at the OLM (PubMed:17584769). Colocalizes with MPP3 to the subapical region of adherens junctions in the retina OLM (PubMed:16519681). {ECO:0000250|UniProtKB:Q9JLB2, ECO:0000269|PubMed:15914641, ECO:0000269|PubMed:16519681, ECO:0000269|PubMed:17584769, ECO:0000269|PubMed:21479189, ECO:0000269|PubMed:27466317}

## Tissue Location

Expressed at the outer limiting membrane in the retina (at protein level) (PubMed:15558731, PubMed:15914641, PubMed:16519681, PubMed:17584769). Expressed in T lymphocytes (at protein level) (PubMed:21479189). Expressed in the kidney (at protein level) (PubMed:17584769).

## Background

Members of the peripheral membrane-associated guanylate kinase (MAGUK) family function in tumor suppression and receptor clustering by forming multiprotein complexes containing distinct sets of transmembrane, cytoskeletal, and cytoplasmic signaling proteins. All MAGUKs contain a PDZ-SH3-GUK core and are divided into 4 subfamilies, DLG-like (see DLG1; MIM 601014), ZO1-like (see TJP1; MIM 601009), p55-like (see MPP1; MIM 305360), and LIN2-like (see CASK; MIM 300172), based on their size and the presence of additional domains (Tseng et al., 2001 [PubMed 11311936]). MPP5 is a member of the p55-like MAGUK subfamily.

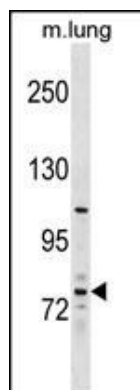
## References

---

Duning, K., et al. J. Biol. Chem. 285(44):33584-33588(2010)  
Ozcelik, M., et al. J. Neurosci. 30(11):4120-4131(2010)  
Gosens, I., et al. Exp. Cell Res. 313(19):3959-3970(2007)  
Gosens, I., et al. Hum. Mol. Genet. 16(16):1993-2003(2007)  
Wells, C.D., et al. Cell 125(3):535-548(2006)

## Images

---



MPP5 Antibody (C-term) (Cat. #AP16584b) western blot analysis in mouse lung tissue lysates (35ug/lane). This demonstrates the MPP5 antibody detected the MPP5 protein (arrow).

Please note: All products are 'FOR RESEARCH USE ONLY. NOT FOR USE IN DIAGNOSTIC OR THERAPEUTIC PROCEDURES'.