

ELK3 Antibody (N-term)

Affinity Purified Rabbit Polyclonal Antibody (Pab)

Catalog # AP16475a

Product Information

| | |
|-------------------|-----------------------------|
| Application | WB, E |
| Primary Accession | P41970 |
| Other Accession | NP_005221.2 |
| Reactivity | Human |
| Host | Rabbit |
| Clonality | Polyclonal |
| Isotype | Rabbit IgG |
| Calculated MW | 44240 |
| Antigen Region | 98-126 |

Additional Information

| | |
|--------------------|---|
| Gene ID | 2004 |
| Other Names | ETS domain-containing protein Elk-3, ETS-related protein ERP, ETS-related protein NET, Serum response factor accessory protein 2, SAP-2, SRF accessory protein 2, ELK3, NET, SAP2 |
| Target/Specificity | This ELK3 antibody is generated from rabbits immunized with a KLH conjugated synthetic peptide between 98-126 amino acids from the N-terminal region of human ELK3. |
| Dilution | WB~~1:1000 E~~Use at an assay dependent concentration. |
| Format | Purified polyclonal antibody supplied in PBS with 0.09% (W/V) sodium azide. This antibody is purified through a protein A column, followed by peptide affinity purification. |
| Storage | Maintain refrigerated at 2-8°C for up to 2 weeks. For long term storage store at -20°C in small aliquots to prevent freeze-thaw cycles. |
| Precautions | ELK3 Antibody (N-term) is for research use only and not for use in diagnostic or therapeutic procedures. |

Protein Information

| | |
|----------|--|
| Name | ELK3 |
| Synonyms | NET, SAP2 |
| Function | May be a negative regulator of transcription, but can activate transcription |

when coexpressed with Ras, Src or Mos. Forms a ternary complex with the serum response factor and the ETS and SRF motifs of the Fos serum response element.

Cellular Location

Nucleus.

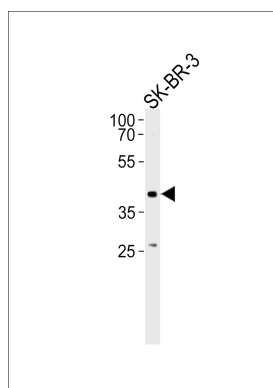
Background

The protein encoded by this gene is a member of the ETS-domain transcription factor family and the ternary complex factor (TCF) subfamily. Proteins in this subfamily regulate transcription when recruited by serum response factor to bind to serum response elements. This protein is activated by signal-induced phosphorylation; studies in rodents suggest that it is a transcriptional inhibitor in the absence of Ras, but activates transcription when Ras is present.

References

Serchov, T., et al. J. Biol. Chem. 285(28):21223-21232(2010)
Rose, J.E., et al. Mol. Med. 16 (7-8), 247-253 (2010) :
Li, B., et al. Tohoku J. Exp. Med. 216(2):139-147(2008)
Wasylyk, C., et al. Cancer Res. 68(5):1275-1283(2008)
Wu, C., et al. Proteomics 7(11):1775-1785(2007)

Images



ELK3 Antibody (N-term) (Cat. #AP16475a) western blot analysis in SK-BR-3 cell line lysates (35ug/lane). This demonstrates the ELK3 antibody detected the ELK3 protein (arrow).

Please note: All products are 'FOR RESEARCH USE ONLY. NOT FOR USE IN DIAGNOSTIC OR THERAPEUTIC PROCEDURES'.