

DTX3L Antibody (Center)

Affinity Purified Rabbit Polyclonal Antibody (Pab)
Catalog # AP16451c

Product Information

Application	WB, E
Primary Accession	Q8TDB6
Other Accession	NP_612144.1
Reactivity	Human
Host	Rabbit
Clonality	Polyclonal
Isotype	Rabbit IgG
Clone Names	RB36023
Antigen Region	453-482

Additional Information

Other Names	E3 ubiquitin-protein ligase DTX3L, 632-, B-lymphoma- and BAL-associated protein, Protein deltex-3-like, Rhysin-2, Rhysin2, DTX3L, BBAP
Target/Specificity	This DTX3L antibody is generated from rabbits immunized with a KLH conjugated synthetic peptide between 453-482 amino acids from the Central region of human DTX3L.
Dilution	WB~~1:1000 E~~Use at an assay dependent concentration.
Format	Purified polyclonal antibody supplied in PBS with 0.09% (W/V) sodium azide. This antibody is purified through a protein A column, followed by peptide affinity purification.
Storage	Maintain refrigerated at 2-8°C for up to 2 weeks. For long term storage store at -20°C in small aliquots to prevent freeze-thaw cycles.
Precautions	DTX3L Antibody (Center) is for research use only and not for use in diagnostic or therapeutic procedures.

Protein Information

Background

DTX3L functions as an E3 ubiquitin ligase (Takeyama et al., 2003 [PubMed 12670957]).

References

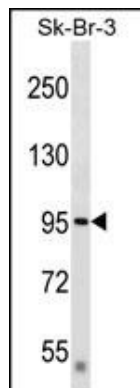
Yan, Q., et al. Mol. Cell 36(1):110-120(2009)

Wilting, S.M., et al. Genes Chromosomes Cancer 47(10):890-905(2008)

Juszczynski, P., et al. Mol. Cell. Biol. 26(14):5348-5359(2006)

Takeyama, K., et al. J. Biol. Chem. 278(24):21930-21937(2003)

Images



DTX3L Antibody (Center) (Cat. #AP16451c) western blot analysis in SK-BR-3 cell line lysates (35ug/lane). This demonstrates the DTX3L antibody detected the DTX3L protein (arrow).

Please note: All products are 'FOR RESEARCH USE ONLY. NOT FOR USE IN DIAGNOSTIC OR THERAPEUTIC PROCEDURES'.