

# TP53BP2 Antibody (N-term)

Affinity Purified Rabbit Polyclonal Antibody (Pab)

Catalog # AP16353a

## Product Information

---

Application	WB, E
Primary Accession	<a href="#">Q13625</a>
Other Accession	<a href="#">NP_001026855.2</a> , <a href="#">NP_005417.1</a>
Reactivity	Human
Host	Rabbit
Clonality	Polyclonal
Isotype	Rabbit IgG
Clone Names	RB30302
Calculated MW	125616
Antigen Region	93-122

## Additional Information

---

Gene ID	7159
Other Names	Apoptosis-stimulating of p53 protein 2, Bcl2-binding protein, Bbp, Renal carcinoma antigen NY-REN-51, Tumor suppressor p53-binding protein 2, 53BP2, p53-binding protein 2, p53BP2, TP53BP2, ASPP2, BBP
Target/Specificity	This TP53BP2 antibody is generated from rabbits immunized with a KLH conjugated synthetic peptide between 93-122 amino acids from the N-terminal region of human TP53BP2.
Dilution	WB~~1:1000 E~~Use at an assay dependent concentration.
Format	Purified polyclonal antibody supplied in PBS with 0.09% (W/V) sodium azide. This antibody is purified through a protein A column, followed by peptide affinity purification.
Storage	Maintain refrigerated at 2-8°C for up to 2 weeks. For long term storage store at -20°C in small aliquots to prevent freeze-thaw cycles.
Precautions	TP53BP2 Antibody (N-term) is for research use only and not for use in diagnostic or therapeutic procedures.

## Protein Information

---

Name	TP53BP2
Synonyms	ASPP2, BBP

<b>Function</b>	Regulator that plays a central role in regulation of apoptosis and cell growth via its interactions with proteins such as TP53 (PubMed: <a href="#">12524540</a> ). Regulates TP53 by enhancing the DNA binding and transactivation function of TP53 on the promoters of proapoptotic genes in vivo. Inhibits the ability of NAE1 to conjugate NEDD8 to CUL1, and thereby decreases NAE1 ability to induce apoptosis. Impedes cell cycle progression at G2/M. Its apoptosis-stimulating activity is inhibited by its interaction with DDX42.
<b>Cellular Location</b>	Cytoplasm, perinuclear region. Nucleus. Note=Predominantly found in the perinuclear region. Some small fraction is nuclear. Sequester in the cytoplasm on overexpression of DDX42
<b>Tissue Location</b>	Widely expressed. Expressed in spleen, thymus, prostate, testis, ovary, small intestine, colon and peripheral blood leukocyte. Reduced expression in breast carcinomas expressing a wild- type TP53 protein. Overexpressed in lung cancer cell lines

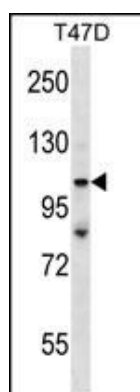
## Background

TP53BP2 is a member of the ASPP (apoptosis-stimulating protein of p53) family of p53 interacting proteins. The protein contains four ankyrin repeats and an SH3 domain involved in protein-protein interactions. It is localized to the perinuclear region of the cytoplasm, and regulates apoptosis and cell growth through interactions with other regulatory molecules including members of the p53 family. Multiple transcript variants encoding different isoforms have been found for this gene.

## References

Rose, J. Phd, et al. Mol. Med. (2010) In press :  
Zhao, J., et al. Hepatology 51(1):142-153(2010)  
Hirata, H., et al. J. Urol. 182(2):721-727(2009)  
Kweekel, D.M., et al. Br. J. Cancer 101(2):357-362(2009)  
Sugiyama, N., et al. Mol. Cell Proteomics 6(6):1103-1109(2007)

## Images



TP53BP2 Antibody (N-term) (Cat. #AP16353a) western blot analysis in T47D cell line lysates (35ug/lane). This demonstrates the TP53BP2 antibody detected the TP53BP2 protein (arrow).

Please note: All products are 'FOR RESEARCH USE ONLY. NOT FOR USE IN DIAGNOSTIC OR THERAPEUTIC PROCEDURES'.