

AIM1L Antibody (C-term)

Affinity Purified Rabbit Polyclonal Antibody (Pab)

Catalog # AP16345b

Product Information

Application	WB, E
Primary Accession	Q8N1P7
Other Accession	NP_001034864.2
Reactivity	Human
Host	Rabbit
Clonality	Polyclonal
Isotype	Rabbit IgG
Clone Names	RB27652
Calculated MW	177913
Antigen Region	395-423

Additional Information

Gene ID	55057
Other Names	Absent in melanoma 1-like protein, Beta/gamma crystallin domain-containing protein 2, AIM1L, CRYBG2
Target/Specificity	This AIM1L antibody is generated from rabbits immunized with a KLH conjugated synthetic peptide between 395-423 amino acids from the C-terminal region of human AIM1L.
Dilution	WB~~1:1000 E~~Use at an assay dependent concentration.
Format	Purified polyclonal antibody supplied in PBS with 0.09% (W/V) sodium azide. This antibody is purified through a protein A column, followed by peptide affinity purification.
Storage	Maintain refrigerated at 2-8°C for up to 2 weeks. For long term storage store at -20°C in small aliquots to prevent freeze-thaw cycles.
Precautions	AIM1L Antibody (C-term) is for research use only and not for use in diagnostic or therapeutic procedures.

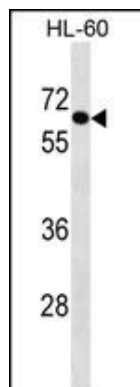
Protein Information

Name	CRYBG2 (HGNC:17295)
Synonyms	AIM1L

References

Szafranski, K., et al. Genome Biol. 8 (8), R154 (2007) :
Fu, G.K., et al. Genomics 84(1):205-210(2004)
Teichmann, U., et al. Mamm. Genome 9(9):715-720(1998)

Images



AIM1L Antibody (C-term) (Cat. #AP16345b) western blot analysis in HL-60 cell line lysates (35ug/lane). This demonstrates the AIM1L antibody detected the AIM1L protein (arrow).

Please note: All products are 'FOR RESEARCH USE ONLY. NOT FOR USE IN DIAGNOSTIC OR THERAPEUTIC PROCEDURES'.