

RBM45 Antibody (C-term)

Affinity Purified Rabbit Polyclonal Antibody (Pab)

Catalog # AP16299b

Product Information

Application	WB, E
Primary Accession	Q8IUH3
Other Accession	NP_694453.2
Reactivity	Human, Rat, Mouse
Host	Rabbit
Clonality	Polyclonal
Isotype	Rabbit IgG
Clone Names	RB35694
Calculated MW	53502
Antigen Region	447-476

Additional Information

Gene ID	129831
Other Names	RNA-binding protein 45, Developmentally-regulated RNA-binding protein 1, RB-1, RNA-binding motif protein 45, RBM45, DRB1 {ECO:0000312 EMBL:AAH665491}, DRBP1
Target/Specificity	This RBM45 antibody is generated from rabbits immunized with a KLH conjugated synthetic peptide between 447-476 amino acids from the C-terminal region of human RBM45.
Dilution	WB~~1 : 1000 E~~Use at an assay dependent concentration.
Format	Purified polyclonal antibody supplied in PBS with 0.09% (W/V) sodium azide. This antibody is purified through a protein A column, followed by peptide affinity purification.
Storage	Maintain refrigerated at 2-8°C for up to 2 weeks. For long term storage store at -20°C in small aliquots to prevent freeze-thaw cycles.
Precautions	RBM45 Antibody (C-term) is for research use only and not for use in diagnostic or therapeutic procedures.

Protein Information

Name	RBM45
Synonyms	DRB1 {ECO:0000312 EMBL:AAH66549.1}, DRBP

Function	RNA-binding protein with binding specificity for poly(C). May play an important role in neural development.
Cellular Location	Cytoplasm. Nucleus. Note=Predominantly cytoplasmic. May shuttle between cytoplasm and nucleus

Background

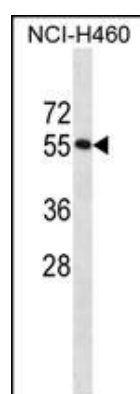
RNA-binding protein with binding specificity for poly(C). May play an important role in neural development.

References

Lamesch, P., et al. Genomics 89(3):307-315(2007)

Tamada, H., et al. Biochem. Biophys. Res. Commun. 297(1):96-104(2002)

Images



RBM45 Antibody (C-term) (Cat. #AP16299b) western blot analysis in NCI-H460 cell line lysates (35ug/lane). This demonstrates the RBM45 antibody detected the RBM45 protein (arrow).

Please note: All products are 'FOR RESEARCH USE ONLY. NOT FOR USE IN DIAGNOSTIC OR THERAPEUTIC PROCEDURES'.