

# MSGN1 Antibody (Center)

Affinity Purified Rabbit Polyclonal Antibody (Pab)

Catalog # AP16154c

## Product Information

---

<b>Application</b>	WB, E
<b>Primary Accession</b>	<a href="#">A6NI15</a>
<b>Other Accession</b>	<a href="#">NP_001099039.1</a>
<b>Reactivity</b>	Human
<b>Host</b>	Rabbit
<b>Clonality</b>	Polyclonal
<b>Isotype</b>	Rabbit IgG
<b>Clone Names</b>	RB35432
<b>Calculated MW</b>	20778
<b>Antigen Region</b>	97-125

## Additional Information

---

<b>Gene ID</b>	343930
<b>Other Names</b>	Mesogenin-1, Paraxial mesoderm-specific mesogenin1, pMesogenin1, pMsgn1, MSGN1
<b>Target/Specificity</b>	This MSGN1 antibody is generated from rabbits immunized with a KLH conjugated synthetic peptide between 97-125 amino acids from the Central region of human MSGN1.
<b>Dilution</b>	WB~~1:1000 E~~Use at an assay dependent concentration.
<b>Format</b>	Purified polyclonal antibody supplied in PBS with 0.09% (W/V) sodium azide. This antibody is purified through a protein A column, followed by peptide affinity purification.
<b>Storage</b>	Maintain refrigerated at 2-8°C for up to 2 weeks. For long term storage store at -20°C in small aliquots to prevent freeze-thaw cycles.
<b>Precautions</b>	MSGN1 Antibody (Center) is for research use only and not for use in diagnostic or therapeutic procedures.

## Protein Information

---

<b>Name</b>	MSGN1
<b>Function</b>	Involved in specifying the paraxial, but not dorsal, mesoderm. May regulate the expression of T-box transcription factors required for mesoderm formation and differentiation (By similarity).

## Background

---

MSGN1 is involved in the formation and segmentation of paraxial mesoderm. Has the regulatory capacity to specify ventrolateral (including future paraxial), but not dorsal (future axial), mesoderm phenotypes. Seems to be an upstream regulator of at least some elements of the Notch and Delta signaling pathway (By similarity).

## References

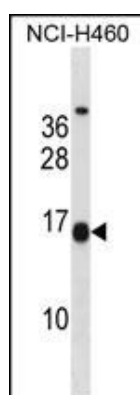
---

Venter, J.C., et al. Science 291(5507):1304-1351(2001)

Yoon, J.K., et al. Dev. Biol. 222(2):376-391(2000)

## Images

---



MSGN1 Antibody (Center) (Cat. #AP16154c) western blot analysis in NCI-H460 cell line lysates (35ug/lane). This demonstrates the MSGN1 antibody detected the MSGN1 protein (arrow).

Please note: All products are 'FOR RESEARCH USE ONLY. NOT FOR USE IN DIAGNOSTIC OR THERAPEUTIC PROCEDURES'.