

SMEK2 Antibody (C-term)

Affinity Purified Rabbit Polyclonal Antibody (Pab)

Catalog # AP16035b

Product Information

Application	WB, E
Primary Accession	Q5MIZ7
Other Accession	NP_065196.1 , NP_001116436.1
Reactivity	Human
Host	Rabbit
Clonality	Polyclonal
Isotype	Rabbit IgG
Clone Names	RB35248
Calculated MW	97458
Antigen Region	720-748

Additional Information

Gene ID	57223
Other Names	Serine/threonine-protein phosphatase 4 regulatory subunit 3B, SMEK homolog 2, SMEK2, KIAA1387, PP4R3B, PPP4R3B
Target/Specificity	This SMEK2 antibody is generated from rabbits immunized with a KLH conjugated synthetic peptide between 720-748 amino acids from the C-terminal region of human SMEK2.
Dilution	WB~~1:1000 E~~Use at an assay dependent concentration.
Format	Purified polyclonal antibody supplied in PBS with 0.09% (W/V) sodium azide. This antibody is purified through a protein A column, followed by peptide affinity purification.
Storage	Maintain refrigerated at 2-8°C for up to 2 weeks. For long term storage store at -20°C in small aliquots to prevent freeze-thaw cycles.
Precautions	SMEK2 Antibody (C-term) is for research use only and not for use in diagnostic or therapeutic procedures.

Protein Information

Name	PPP4R3B (HGNC:29267)
Function	Regulatory subunit of serine/threonine-protein phosphatase 4 (PP4). May regulate the activity of PPP4C at centrosomal microtubule organizing centers.

Cellular Location	Cytoplasm. Cytoplasm, cytoskeleton, microtubule organizing center, centrosome. Nucleus Note=In interphase localized in the cytoplasm and (with higher levels) the nucleus. During metaphase located in pericentriolar regions
Tissue Location	Moderately expressed in tissues and specific brain regions examined.

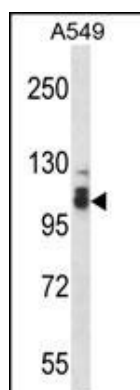
Background

Regulatory subunit of serine/threonine-protein phosphatase 4 (PP4). May regulate the activity of PPP4C at centrosomal microtubule organizing centers.

References

Chowdhury, D., et al. Mol. Cell 31(1):33-46(2008)
Ewing, R.M., et al. Mol. Syst. Biol. 3, 89 (2007) :
Beausoleil, S.A., et al. Nat. Biotechnol. 24(10):1285-1292(2006)
Gingras, A.C., et al. Mol. Cell Proteomics 4(11):1725-1740(2005)
Mendoza, M.C., et al. Mol. Cell. Biol. 25(17):7839-7853(2005)

Images



SMEK2 Antibody (C-term) (Cat. #AP16035b) western blot analysis in A549 cell line lysates (35ug/lane). This demonstrates the SMEK2 antibody detected the SMEK2 protein (arrow).

Please note: All products are 'FOR RESEARCH USE ONLY. NOT FOR USE IN DIAGNOSTIC OR THERAPEUTIC PROCEDURES'.