

Connexin 31 Antibody (C-term)

Purified Rabbit Polyclonal Antibody (Pab)

Catalog # AP1553c

Product Information

Application	WB, E
Primary Accession	O75712
Reactivity	Human
Host	Rabbit
Clonality	Polyclonal
Isotype	Rabbit IgG
Clone Names	RB0443
Calculated MW	30818
Antigen Region	204-233

Additional Information

Gene ID	2707
Other Names	Gap junction beta-3 protein, Connexin-31, Cx31, GJB3, CX31
Target/Specificity	This Connexin 31 Antibody antibody is generated from rabbits immunized with a KLH conjugated synthetic peptide between 204~233 amino acids from the C-terminal region of human GJB3.
Dilution	WB~~1:1000 E~~Use at an assay dependent concentration.
Format	Purified polyclonal antibody supplied in PBS with 0.09% (W/V) sodium azide. This antibody is prepared by Saturated Ammonium Sulfate (SAS) precipitation followed by dialysis against PBS.
Storage	Maintain refrigerated at 2-8°C for up to 2 weeks. For long term storage store at -20°C in small aliquots to prevent freeze-thaw cycles.
Precautions	Connexin 31 Antibody (C-term) is for research use only and not for use in diagnostic or therapeutic procedures.

Protein Information

Name	GJB3
Synonyms	CX31
Function	One gap junction consists of a cluster of closely packed pairs of transmembrane channels, the connexons, through which materials of low MW diffuse from one cell to a neighboring cell.

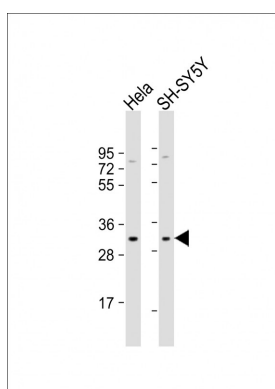
Background

Gap junctions are conduits that allow the direct cell-to-cell passage of small cytoplasmic molecules, including ions, metabolic intermediates, and second messengers, and thereby mediate intercellular metabolic and electrical communication. Gap junction channels consist of connexin protein subunits, which are encoded by a multigene family. GJBs (gap-junction proteins or connexins) play crucial functional roles associated with these channels. Defects in GJB3 have been linked to erythrokeratoderma variabilis (EKV) is an autosomal dominant genodermatosis characterized by transient figurate red patches or hyperkeratosis. Mutations in GJB2 have also been associated with genetically derived hearing impairments, including autosomal recessive nonsyndromic deafness.

References

- Plantard, L., et al., Hum. Mol. Genet. 12(24):3287-3294 (2003).
Rouan, F., et al., Exp. Dermatol. 12(2):191-197 (2003).
Mhatre, A.N., et al., Clin. Genet. 63(2):154-159 (2003).
Diestel, S., et al., Biochem. Biophys. Res. Commun. 296(3):721-728 (2002).
Di, W.L., et al., Hum. Mol. Genet. 11(17):2005-2014 (2002).

Images



All lanes : Anti-GJB3 Antibody (C211) at 1:1000 dilution
Lane 1: HeLa whole cell lysate Lane 2: SH-SY5Y whole cell lysate
Lysates/proteins at 20 µg per lane. Secondary Goat Anti-Rabbit IgG, (H+L), Peroxidase conjugated at 1/10000 dilution. Predicted band size : 31 kDa
Blocking/Dilution buffer: 5% NFDM/TBST.

Please note: All products are 'FOR RESEARCH USE ONLY. NOT FOR USE IN DIAGNOSTIC OR THERAPEUTIC PROCEDURES'.