

GJA10 Antibody (C-term)

Purified Rabbit Polyclonal Antibody (Pab)

Catalog # AP1550b

Product Information

Application	WB, IHC-P, E
Primary Accession	P57773
Reactivity	Human, Mouse
Host	Rabbit
Clonality	Polyclonal
Isotype	Rabbit IgG
Calculated MW	58842
Antigen Region	484-515

Additional Information

Gene ID	81025
Other Names	Gap junction alpha-9 protein, Connexin-58, Cx58, Connexin-59, Cx59, Gap junction alpha-10 protein, GJA9, GJA10
Target/Specificity	This GJA10 antibody is generated from rabbits immunized with a KLH conjugated synthetic peptide between 484-515 amino acids from the C-terminal region of human GJA10.
Dilution	WB~~1:1000 IHC-P~~1:100~500 E~~Use at an assay dependent concentration.
Format	Purified polyclonal antibody supplied in PBS with 0.09% (W/V) sodium azide. This antibody is prepared by Saturated Ammonium Sulfate (SAS) precipitation followed by dialysis against PBS.
Storage	Maintain refrigerated at 2-8°C for up to 2 weeks. For long term storage store at -20°C in small aliquots to prevent freeze-thaw cycles.
Precautions	GJA10 Antibody (C-term) is for research use only and not for use in diagnostic or therapeutic procedures.

Protein Information

Name	GJA9
Synonyms	GJA10
Function	One gap junction consists of a cluster of closely packed pairs of transmembrane channels, the connexons, through which materials of low MW diffuse from one cell to a neighboring cell.

Cellular Location	Cell membrane; Multi-pass membrane protein. Cell junction, gap junction
Tissue Location	Highly abundant in skeletal muscle. Also detected in testis.

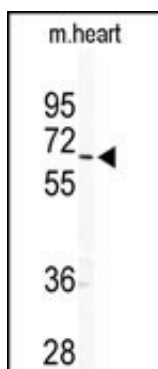
Background

GJA8 is an integral membrane protein that belongs to the connexin family, alpha-type (group II) subfamily. One gap junction consists of a cluster of closely packed pairs of transmembrane channels, the connexons, through which materials of low MW diffuse from one cell to a neighboring cell. A connexon is composed of a hexamer of connexins.

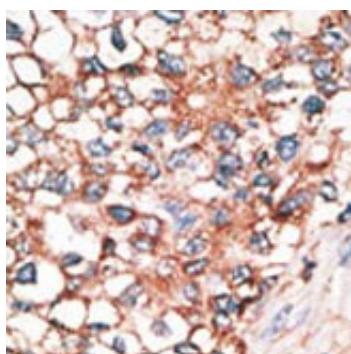
References

Hombach S, et al., Eur J Neurosci. 2004 May;19(10):2633-40.
Houghton FD, et al., Biol Reprod. 2002 May;66(5):1403-12.
Manthey D, et al., J Biol Chem. 1999 May 21;274(21):14716-23.

Images



Western blot analysis of GJA10 Antibody (C-term) (Cat.#AP1550b) in mouse heart tissue lysates (35ug/lane). GJA10 (arrow) was detected using the purified Pab.



Formalin-fixed and paraffin-embedded human cancer tissue reacted with the primary antibody, which was peroxidase-conjugated to the secondary antibody, followed by AEC staining. This data demonstrates the use of this antibody for immunohistochemistry; clinical relevance has not been evaluated. BC = breast carcinoma; HC = hepatocarcinoma.

Citations

- [Expression pattern of connexins in the corneal and limbal epithelium of a primate.](#)

Please note: All products are 'FOR RESEARCH USE ONLY. NOT FOR USE IN DIAGNOSTIC OR THERAPEUTIC PROCEDURES'.