

# S. Aureus Delta Hemolysin Antibody

Affinity Purified Rabbit Polyclonal Antibody (Pab)

Catalog # AP15024a

## Product Information

---

Application	WB, E
Primary Accession	<a href="#">P0C1V1</a>
Reactivity	S. Aureus
Host	Rabbit
Clonality	Polyclonal
Isotype	Rabbit IgG
Clone Names	RB33802
Calculated MW	2979
Antigen Region	1-30

## Additional Information

---

Gene ID	98347068
Other Names	Delta-hemolysin, Delta-lysin, Delta-toxin, hld
Target/Specificity	This Delta Hemolysin Antibody is generated from rabbits immunized with KLH conjugated peptide 1-30aa from delta hemolysin protein of saphylococcus aureus.
Dilution	WB~~1:1000 E~~Use at an assay dependent concentration.
Format	Purified polyclonal antibody supplied in PBS with 0.09% (W/V) sodium azide. This antibody is purified through a protein A column, followed by peptide affinity purification.
Storage	Maintain refrigerated at 2-8°C for up to 2 weeks. For long term storage store at -20°C in small aliquots to prevent freeze-thaw cycles.
Precautions	S. Aureus Delta Hemolysin Antibody is for research use only and not for use in diagnostic or therapeutic procedures.

## Protein Information

---

Name	hld
Function	Lyses erythrocytes and many other mammalian cells.
Cellular Location	Secreted. Host cell membrane. Note=In infected cells, it is found in the membrane

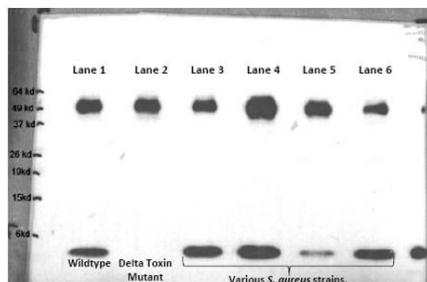
## Background

---

Bacterial toxin that lyses erythrocytes and many other mammalian cells.

## Images

---



WB analysis of Delta Hemolysin antibody. Lane 1 is a wildtype *S. aureus* strain. Lane 2 is an isogenic delta toxin mutant. Lanes 3-6 represent various *S. aureus* clinical isolates. The low MW band is delta toxin (absent in the mutant) and the higher MW band is protein A.

## Citations

---

- [Staphylococcus aureus N-terminus formylated  \$\delta\$ -toxin tends to form amyloid fibrils, while the deformylated  \$\delta\$ -toxin tends to form functional oligomer complexes](#)
- [The Staphylococcus epidermidis agr quorum-sensing system: signal identification, cross-talk, and importance in colonization.](#)

Please note: All products are 'FOR RESEARCH USE ONLY. NOT FOR USE IN DIAGNOSTIC OR THERAPEUTIC PROCEDURES'.