

KSHV ORF 57 Antibody

Affinity Purified Rabbit Polyclonal Antibody (Pab)

Catalog # AP15004a

Product Information

Application	WB, E
Primary Accession	P88945
Reactivity	Human
Host	Rabbit
Clonality	Polyclonal
Isotype	Rabbit IgG
Clone Names	RB33797
Calculated MW	30828
Antigen Region	33-60

Additional Information

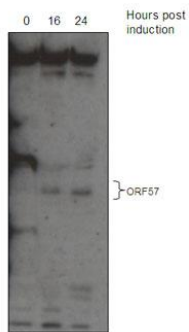
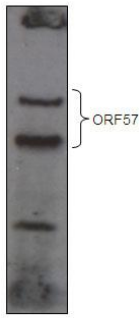
Target/Specificity	This KSHV ORF 57 antibody is generated from rabbits immunized with a KLH conjugated synthetic peptide between 33-60 amino acids from human KSHV ORF 57.
Dilution	WB~~1:1000 E~~Use at an assay dependent concentration.
Format	Purified polyclonal antibody supplied in PBS with 0.09% (W/V) sodium azide. This antibody is purified through a protein A column, followed by peptide affinity purification.
Storage	Maintain refrigerated at 2-8°C for up to 2 weeks. For long term storage store at -20°C in small aliquots to prevent freeze-thaw cycles.
Precautions	KSHV ORF 57 Antibody is for research use only and not for use in diagnostic or therapeutic procedures.

Protein Information

Name	P88945
------	--------

Images

KSHV ORF 57 Antibody (Cat. #AP15004a) western blot analysis Over-expressed GFP-tagged ORF57 in HEK293T cell line .



KSHV ORF 57 Antibody (Cat. #AP15004a) western blot analysis. ORF57 expressed from an inducible virally infected B-cell line, TREx BCBL 1-Rta.

Citations

- [Activation of DNA Damage Response Pathways during Lytic Replication of KSHV.](#)

Please note: All products are 'FOR RESEARCH USE ONLY. NOT FOR USE IN DIAGNOSTIC OR THERAPEUTIC PROCEDURES'.