

KLF2 Antibody (N-term)

Affinity Purified Rabbit Polyclonal Antibody (Pab)

Catalog # AP14973a

Product Information

Application	WB, E
Primary Accession	Q9Y5W3
Other Accession	NP_057354.1
Reactivity	Human, Mouse
Host	Rabbit
Clonality	Polyclonal
Isotype	Rabbit IgG
Clone Names	RB34945
Calculated MW	37420
Antigen Region	13-42

Additional Information

Gene ID	10365
Other Names	Krueppel-like factor 2, Lung krueppel-like factor, KLF2, LKLF
Target/Specificity	This KLF2 antibody is generated from rabbits immunized with a KLH conjugated synthetic peptide between 13-42 amino acids from the N-terminal region of human KLF2.
Dilution	WB~~1:1000 E~~Use at an assay dependent concentration.
Format	Purified polyclonal antibody supplied in PBS with 0.05% (V/V) Proclin 300. This antibody is purified through a protein A column, followed by peptide affinity purification.
Storage	Maintain refrigerated at 2-8°C for up to 2 weeks. For long term storage store at -20°C in small aliquots to prevent freeze-thaw cycles.
Precautions	KLF2 Antibody (N-term) is for research use only and not for use in diagnostic or therapeutic procedures.

Protein Information

Name	KLF2
Synonyms	LKLF
Function	Transcription factor that binds to the CACCC box in the promoter of target genes such as HBB/beta globin or NOV and activates their transcription

(PubMed:[21063504](#)). Might be involved in transcriptional regulation by modulating the binding of the RARA nuclear receptor to RARE DNA elements (PubMed:[28167758](#)).

Cellular Location

Nucleus.

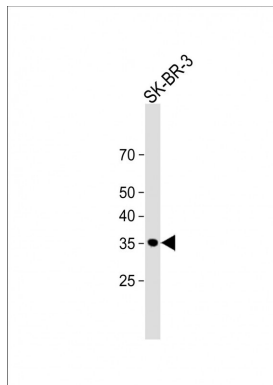
Background

KLF2 binds to the CACCC box in the beta-globin gene promoter and activates transcription (By similarity).

References

Lin, Z., et al. Arterioscler. Thromb. Vasc. Biol. 30(10):1952-1959(2010)
Zahlten, J., et al. J. Immunol. 185(1):597-604(2010)
Wang, W., et al. Blood 115(14):2971-2979(2010)
Boon, R.A., et al. Blood 115(12):2533-2542(2010)
Villarreal, G. Jr., et al. Biochem. Biophys. Res. Commun. 391(1):984-989(2010)

Images



All lanes: Anti-KLF2 Antibody (N-term) at 1:1000 dilution + SK-BR-3 whole cell lysate Lysates/proteins at 20 µg per lane. Secondary: Goat Anti-Rabbit IgG, (H+L), Peroxidase conjugated (ASP1615) at 1/15000 dilution. Observed band size: 37 KDa Blocking/Dilution buffer: 5% NFDm/TBST.

Citations

- [Cilostazol Induces eNOS and TM Expression via Activation with Sirtuin 1/Krüppel-like Factor 2 Pathway in Endothelial Cells](#)
- [Induces Thrombomodulin Expression and Tissue-Type Plasminogen Activator Secretion via the Activation of Krüppel-Like Factor 2 within Endothelial Cells](#)
- [ERK5/HDAC5-Mediated, Resveratrol- and Pterostilbene-Induced Expression of MnSOD in Human Endothelial Cells](#)
- [Activation of Krüppel-Like Factor 2 with Ginkgo Biloba Extract Induces eNOS Expression and Increases NO Production in Cultured Human Umbilical Endothelial Cells](#)

Please note: All products are 'FOR RESEARCH USE ONLY. NOT FOR USE IN DIAGNOSTIC OR THERAPEUTIC PROCEDURES'.