

# DVL2 Antibody (C-term)

Affinity Purified Rabbit Polyclonal Antibody (Pab)  
Catalog # AP14900b

## Product Information

---

<b>Application</b>	WB, E
<b>Primary Accession</b>	<a href="#">O14641</a>
<b>Other Accession</b>	<a href="#">Q60838</a> , <a href="#">NP_004413.1</a>
<b>Reactivity</b>	Human
<b>Predicted</b>	Mouse
<b>Host</b>	Rabbit
<b>Clonality</b>	Polyclonal
<b>Isotype</b>	Rabbit IgG
<b>Clone Names</b>	RB35224
<b>Antigen Region</b>	588-617

## Additional Information

---

<b>Other Names</b>	Segment polarity protein dishevelled homolog DVL-2, Dishevelled-2, DSH homolog 2, DVL2
<b>Target/Specificity</b>	This DVL2 antibody is generated from rabbits immunized with a KLH conjugated synthetic peptide between 588-617 amino acids from the C-terminal region of human DVL2.
<b>Dilution</b>	WB~~1:1000 E~~Use at an assay dependent concentration.
<b>Format</b>	Purified polyclonal antibody supplied in PBS with 0.09% (W/V) sodium azide. This antibody is purified through a protein A column, followed by peptide affinity purification.
<b>Storage</b>	Maintain refrigerated at 2-8°C for up to 2 weeks. For long term storage store at -20°C in small aliquots to prevent freeze-thaw cycles.
<b>Precautions</b>	DVL2 Antibody (C-term) is for research use only and not for use in diagnostic or therapeutic procedures.

## Protein Information

---

### Background

---

This gene encodes a member of the dishevelled (dsh) protein family. The vertebrate dsh proteins have approximately 40% amino acid sequence similarity with Drosophila dsh. This gene encodes a 90-kD protein that undergoes posttranslational phosphorylation to form a 95-kD cytoplasmic protein, which may play a role in the signal transduction pathway mediated by multiple Wnt proteins. The mechanisms of dishevelled

function in Wnt signaling are likely to be conserved among metazoans.

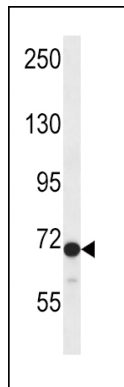
## References

---

Inkster, B., et al. Neuroimage 53(3):908-917(2010)  
Kikuchi, K., et al. EMBO J. 29(20):3470-3483(2010)  
Bailey, S.D., et al. Diabetes Care 33(10):2250-2253(2010)  
Gao, C., et al. Nat. Cell Biol. 12(8):781-790(2010)  
Gnad, T., et al. Mol. Cancer 9, 31 (2010) :

## Images

---



DVL2 Antibody (C-term) (Cat. #AP14900b) western blot analysis in CEM cell line lysates (35ug/lane). This demonstrates the DVL2 antibody detected the DVL2 protein (arrow).

Please note: All products are 'FOR RESEARCH USE ONLY. NOT FOR USE IN DIAGNOSTIC OR THERAPEUTIC PROCEDURES'.