

## CDR2 Antibody (C-term)

Affinity Purified Rabbit Polyclonal Antibody (Pab)

Catalog # AP14854b

### Product Information

---

<b>Application</b>	WB, IHC-P, E
<b>Primary Accession</b>	<a href="#">Q01850</a>
<b>Other Accession</b>	<a href="#">NP_001793.1</a>
<b>Reactivity</b>	Human
<b>Host</b>	Rabbit
<b>Clonality</b>	Polyclonal
<b>Isotype</b>	Rabbit IgG
<b>Clone Names</b>	RB34986
<b>Calculated MW</b>	51855
<b>Antigen Region</b>	420-448

### Additional Information

---

<b>Gene ID</b>	1039
<b>Other Names</b>	Cerebellar degeneration-related protein 2, Major Yo paraneoplastic antigen, Paraneoplastic cerebellar degeneration-associated antigen, CDR2, PCD17
<b>Target/Specificity</b>	This CDR2 antibody is generated from rabbits immunized with a KLH conjugated synthetic peptide between 420-448 amino acids from the C-terminal region of human CDR2.
<b>Dilution</b>	WB~~1:1000 IHC-P~~1:100~500 E~~Use at an assay dependent concentration.
<b>Format</b>	Purified polyclonal antibody supplied in PBS with 0.09% (W/V) sodium azide. This antibody is purified through a protein A column, followed by peptide affinity purification.
<b>Storage</b>	Maintain refrigerated at 2-8°C for up to 2 weeks. For long term storage store at -20°C in small aliquots to prevent freeze-thaw cycles.
<b>Precautions</b>	CDR2 Antibody (C-term) is for research use only and not for use in diagnostic or therapeutic procedures.

### Protein Information

---

<b>Name</b>	CDR2
<b>Synonyms</b>	PCD17

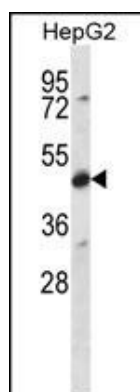
## References

---

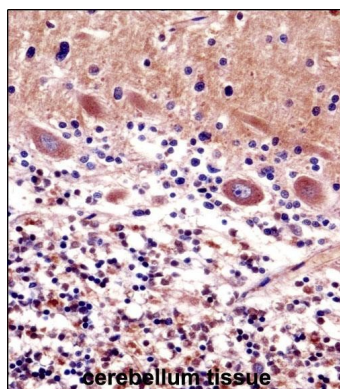
Rose, J.E., et al. Mol. Med. 16 (7-8), 247-253 (2010) :  
Balamurugan, K., et al. Oncogene 28(37):3274-3285(2009)  
Balbo, M., et al. FEMS Microbiol. Lett. 249(2):359-366(2005)  
Sutton, I.J., et al. J. Neuroimmunol. 150 (1-2), 98-106 (2004) :  
Sakai, K., et al. Mol. Cell. Neurosci. 19(4):477-484(2002)

## Images

---



CDR2 Antibody (C-term) (Cat. #AP14854b) western blot analysis in HepG2 cell line lysates (35ug/lane). This demonstrates the CDR2 antibody detected the CDR2 protein (arrow).



CDR2 Antibody (C-term) (AP14854b) immunohistochemistry analysis in formalin fixed and paraffin embedded human cerebellum tissue followed by peroxidase conjugation of the secondary antibody and DAB staining. This data demonstrates the use of CDR2 Antibody (C-term) for immunohistochemistry. Clinical relevance has not been evaluated.

Please note: All products are 'FOR RESEARCH USE ONLY. NOT FOR USE IN DIAGNOSTIC OR THERAPEUTIC PROCEDURES'.