

Alkaline Phosphatase (ALPI) Antibody (Center)

Purified Rabbit Polyclonal Antibody (Pab)

Catalog # AP1480c

Product Information

Application	IF, WB, IHC-P, E
Primary Accession	P09923
Reactivity	Human
Host	Rabbit
Clonality	Polyclonal
Isotype	Rabbit IgG
Calculated MW	56812
Antigen Region	274-304

Additional Information

Gene ID	248
Other Names	Intestinal-type alkaline phosphatase, IAP, Intestinal alkaline phosphatase, ALPI
Target/Specificity	This Alkaline Phosphatase (ALPI) antibody is generated from rabbits immunized with a KLH conjugated synthetic peptide between 274-304 amino acids from the Central region of human Alkaline Phosphatase (ALPI).
Dilution	IF~~1:100 WB~~1:1000 IHC-P~~1:100 E~~Use at an assay dependent concentration.
Format	Purified polyclonal antibody supplied in PBS with 0.09% (W/V) sodium azide. This antibody is prepared by Saturated Ammonium Sulfate (SAS) precipitation followed by dialysis against PBS.
Storage	Maintain refrigerated at 2-8°C for up to 2 weeks. For long term storage store at -20°C in small aliquots to prevent freeze-thaw cycles.
Precautions	Alkaline Phosphatase (ALPI) Antibody (Center) is for research use only and not for use in diagnostic or therapeutic procedures.

Protein Information

Name	ALPI
Function	Alkaline phosphatase that can hydrolyze various phosphate compounds.
Cellular Location	Cell membrane {ECO:0000250 UniProtKB:P15693}; Lipid-anchor, GPI-anchor {ECO:0000250 UniProtKB:P15693}

Background

There are at least four distinct but related alkaline phosphatases: intestinal, placental, placental-like, and liver/bone/kidney (tissue non-specific). The intestinal alkaline phosphatase gene encodes a digestive brush-border enzyme. This enzyme is upregulated during small intestinal epithelial cell differentiation.

References

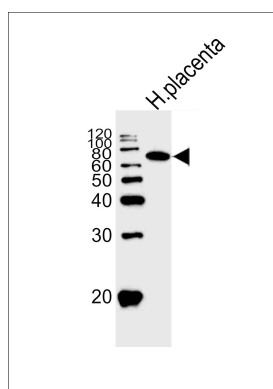
References for protein:

1. Torres, M.I., Pathol. Res. Pract. 203 (6), 485-487 (2007)
2. Olsen, L., Am. J. Physiol. Gastrointest. Liver Physiol. 289 (2), G220-G226 (2005)
3. Alkhoury, F., Am. J. Physiol. Gastrointest. Liver Physiol. 289 (2), G285-G290 (2005)

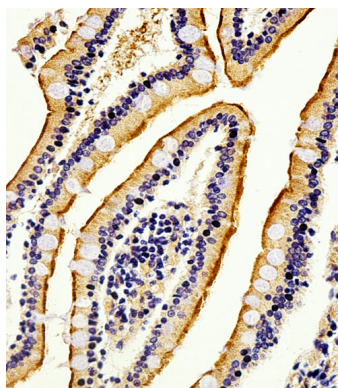
References for HeLa cell line:

1. Scherer WF, Syverton JT, Gey GO (May 1953). "Studies on the propagation in vitro of poliomyelitis viruses. IV. Viral multiplication in a stable strain of human malignant epithelial cells (strain HeLa) derived from an epidermoid carcinoma of the cervix". J. Exp. Med. 97 (5): 695–710. [PubMed:13052828].
2. Macville M, Schröck E, Padilla-Nash H, Keck C, Ghadimi BM, Zimonjic D, Popescu N, Ried T (January 1999). "Comprehensive and definitive molecular cytogenetic characterization of HeLa cells by spectral karyotyping". Cancer Res. 59 (1): 141–50. [PubMed: 9892199].
3. Rahbari R, Sheahan T, Modes V, Collier P, Macfarlane C, Badge RM (April 2009). "A novel L1 retrotransposon marker for HeLa cell line identification". BioTechniques 46 (4): 277–84. [PubMed: 19450234].
4. Capes-Davis A, Theodosopoulos G, Atkin I, Drexler HG, Kohara A, MacLeod RA, Masters JR, Nakamura Y, Reid YA, Reddel RR, Freshney RI (July 2010). "Check your cultures! A list of cross-contaminated or misidentified cell lines". Int. J. Cancer 127 (1): 1–8. [PubMed:20143388].

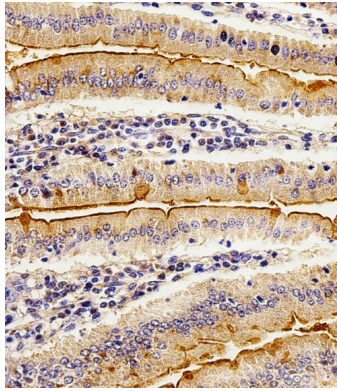
Images



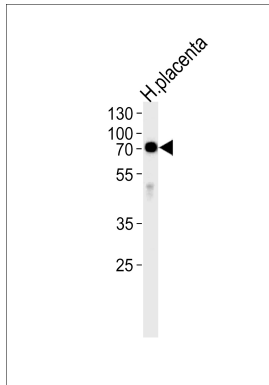
Western blot analysis of lysate from human placenta tissue lysate, using ALPI Antibody (Center)(Cat. #AP1480c). AP1480c was diluted at 1:1000. A goat anti-rabbit IgG H&L(HRP) at 1:10000 dilution was used as the secondary antibody. Lysate at 20ug.



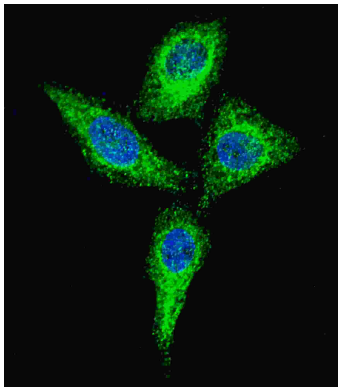
Immunohistochemical analysis of paraffin-embedded H. small intestine section using Alkaline Phosphatase (ALPI) Antibody(Center) (Cat#AP1480c). AP1480c was diluted at 1:100 dilution. A peroxidase-conjugated goat anti-rabbit IgG at 1:400 dilution was used as the secondary antibody, followed by DAB staining.



Immunohistochemical analysis of paraffin-embedded M. small intestine section using JAK2 Antibody (C-term) (Cat#AP1480c). AP1480c was diluted at 1:100 dilution. A peroxidase-conjugated goat anti-rabbit IgG at 1:400 dilution was used as the secondary antibody, followed by DAB staining.



Western blot analysis of lysate from human placenta tissue, using ALPI Antibody (Center) (Cat. #AP1480c). AP1480c was diluted at 1:1000 at each lane. A goat anti-rabbit IgG H&L (HRP) at 1:5000 dilution was used as the secondary antibody. Lysate at 35 µg per lane.



Fluorescent confocal image of HeLa cells stained with Alkaline Phosphatase (ALPI) (Center) antibody. HeLa cells were fixed with 4% PFA (20 min), permeabilized with Triton X-100 (0.2%, 30 min). Cells were then incubated with AP1480c Alkaline Phosphatase (ALPI) (Center) primary antibody (1:100, 2 h at room temperature). For secondary antibody, Alexa Fluor® 488 conjugated donkey anti-rabbit antibody (green) was used (1:1000, 1 h). Nuclei were counterstained with Hoechst 33342 (blue) (10 µg/ml, 5 min). Alkaline Phosphatase (ALPI) immunoreactivity is localized to the cytoplasm of HeLa cells.

Citations

- [Growth differentiation factor 9 concentration in the follicular fluid of infertile women with endometriosis.](#)

Please note: All products are 'FOR RESEARCH USE ONLY. NOT FOR USE IN DIAGNOSTIC OR THERAPEUTIC PROCEDURES'.