

# LAT2 Antibody (Center)

Affinity Purified Rabbit Polyclonal Antibody (Pab)

Catalog # AP14803c

## Product Information

---

|                   |   |
|-------------------|---|
| Application       | WB, E   |
| Primary Accession | <a href="#">Q9GZY6</a>                                    |
| Other Accession   | <a href="#">NP_054865.2</a> , <a href="#">NP_115852.1</a> |
| Reactivity        | Human   |
| Host              | Rabbit  |
| Clonality         | Polyclonal  |
| Isotype           | Rabbit IgG  |
| Clone Names       | RB34108   |
| Calculated MW     | 26550   |
| Antigen Region    | 107-135   |

## Additional Information

---

|                    |  |
|--------------------|--|
| Gene ID            | 7462   |
| Other Names        | Linker for activation of T-cells family member 2, Linker for activation of B-cells, Membrane-associated adapter molecule, Non-T-cell activation linker, Williams-Beuren syndrome chromosomal region 15 protein, Williams-Beuren syndrome chromosomal region 5 protein, LAT2, LAB, NTAL, WBS15, WBSCR15, WBSCR5 |
| Target/Specificity | This LAT2 antibody is generated from rabbits immunized with a KLH conjugated synthetic peptide between 107-135 amino acids from the Central region of human LAT2.  |
| Dilution           | WB~~1:1000 E~~Use at an assay dependent concentration.   |
| Format             | Purified polyclonal antibody supplied in PBS with 0.09% (W/V) sodium azide. This antibody is purified through a protein A column, followed by peptide affinity purification.   |
| Storage            | Maintain refrigerated at 2-8°C for up to 2 weeks. For long term storage store at -20°C in small aliquots to prevent freeze-thaw cycles.  |
| Precautions        | LAT2 Antibody (Center) is for research use only and not for use in diagnostic or therapeutic procedures.   |

## Protein Information

---

|      |      |
|------|------|
| Name | LAT2 |
|------|------|

|                          |  |
|--------------------------|--|
| <b>Synonyms</b>          | LAB, NTAL, WBS15, WBSCR15, WBSCR5  |
| <b>Function</b>          | Involved in FCER1 (high affinity immunoglobulin epsilon receptor)-mediated signaling in mast cells. May also be involved in BCR (B-cell antigen receptor)-mediated signaling in B-cells and FCGR1 (high affinity immunoglobulin gamma Fc receptor I)-mediated signaling in myeloid cells. Couples activation of these receptors and their associated kinases with distal intracellular events through the recruitment of GRB2. |
| <b>Cellular Location</b> | Cell membrane; Single-pass type III membrane protein Note=Present in lipid rafts   |
| <b>Tissue Location</b>   | Highly expressed in spleen, peripheral blood lymphocytes, and germinal centers of lymph nodes. Also expressed in placenta, lung, pancreas and small intestine. Present in B-cells, NK cells and monocytes. Absent from T-cells (at protein level)  |

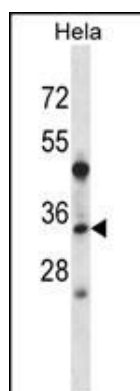
## Background

This gene is one of the contiguous genes at 7q11.23 commonly deleted in Williams syndrome, a multisystem developmental disorder. This gene consists of at least 14 exons, and its alternative splicing generates 3 transcript variants, all encoding the same protein.

## References

Rieke, C., et al. Cell. Signal. 22(3):395-403(2010)  
Luo, X., et al. J. Clin. Endocrinol. Metab. 94(11):4533-4539(2009)  
Saito, A., et al. J. Hum. Genet. 54(6):317-323(2009)  
Svojgr, K., et al. Immunol. Lett. 122(2):185-192(2009)  
Whittaker, G.C., et al. Blood 112(7):2869-2877(2008)

## Images



LAT2 Antibody (Center) (Cat. #AP14803c) western blot analysis in HeLa cell line lysates (35ug/lane). This demonstrates the LAT2 antibody detected the LAT2 protein (arrow).

Please note: All products are 'FOR RESEARCH USE ONLY. NOT FOR USE IN DIAGNOSTIC OR THERAPEUTIC PROCEDURES'.